

# THE CONNECTOR

SUMMER 2010

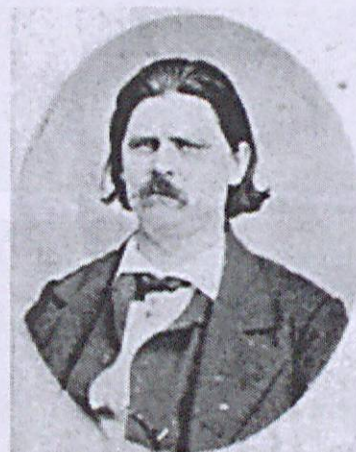
VOLUME 14 NUMBER 3

*Preserving the Past...For the Future*

## BLOCKAGDE RUNNER ADVANCE AMBITIOUS PROJECT OF GOVERNOR ZEBULON B. VANCE

At the beginning of the War Between The States, **President Abraham Lincoln** and his cabinet devised the "**Anaconda Plan**", a naval blockade. Its purpose was to blockade southern seaports preventing the south from receiving much needed supplies for the war effort and sustaining civilian life. At this time the union had only 42 warships in commission. Many of those were in foreign service and the many miles of confederate coastline and harbors stretched the few union ships too far, allowing the confederacy to receive its shipments. This only lasted until the summer of 1862 when the union blockade became more effective. By this date all North Carolina ports and harbors had been closed by union occupation with the exception of Wilmington.

After serving with the twenty-six NC Regiment, **Zebulon B. Vance** left the military service in September 1862 and won the gubernatorial election in North Carolina. As Governor he refused to allow supplies smuggled into North Carolina by blockade runners to be given to other states until North Carolinians had their share. As all could see the war escalating, Vance knew this would soon be overcome by the need from other states. Seeing the need for a state owned blockade runner he started his campaign



N.C. Governor  
Zebulon B. Vance  
1862

*(Continued on page 7)*

## JAMES MACON STALLINGS

**James Macon Stallings**, the son of **William Badger and Elizabeth (Perdue) Stallings** was born October 1863 in Franklin Co., NC. He married **Mary Harris**, the daughter of **A. S. Hariss** about 1885 in Franklin

Co., NC. James and Mary had five children: sons **Herbert, Norman, James, Paul** and one daughter, **Lillie**. He was a Tobacco Warehouseman in Manning Township, District 70, before becoming Chief of Police in Spring Hope.

On the night of September 18th, 1910 Chief Stallings had a warrant for **Norman Lewis** for violation of prohibition laws. He went with two others to the home to make arrest. It was in the early hours of the night, about

*(Continued on page 10)*

### INSIDE THIS ISSUE:

SARAH E LILES	3
BRASWELL LIBRARY	4
THOMAS VIVERETTE	5
FREE WEB SITES	6
WAR HERO	8
MISTAKEN ID	9
WILLIAM JAMES SAMFORD	10
ROCKY MT. CEMETERY DIV	11
BATTLEBORO CEMETERY	11
PINEVIEW CEMETERY	12
ASBURY FINCH	16
SILLS FAMILY	17
WARREN CO. LETTER	18
NASH CO. METEORITE	18
NEWSPAPER DEATH	19
NC BASTARDY BONDS	19
INDEX	20





TAR RIVER CONNECTIONS GENEALOGICAL SOCIETY  
PO BOX 8764  
ROCKY MOUNT NC 27804

[http://www.braswell-library.org/  
adult\\_tar\\_river\\_connections.htm](http://www.braswell-library.org/adult_tar_river_connections.htm)

Annual dues: \$20.00  
Newsletter published quarterly  
Email: [trcgs@braswell-library.org](mailto:trcgs@braswell-library.org)

Monthly meetings are held at 6:30 pm the third Tuesday of each month (except December) in the Warner Room at Braswell Memorial Library, 727 N. Grace Street in Rocky Mount, NC.

#### 2010 OFFICERS

JIMMY WINTERS, PRESIDENT

WALLACE ABERNETHY, VICE  
PRESIDENT

JIM STALLINGS, SECRETARY

DEBBIE PEACOCK, TREASURER

DIRECTORS: JIM STALLINGS, REESE  
FERRELL, MARY WEEKS

#### NEWSLETTER:

BILLIE JO MATTHEWS,

JANET SADOWSKI

### Submission of Articles

We are looking for articles on the history and genealogy of the North Carolina counties of Person, Vance, Granville, Franklin, Nash, Edgecombe, Pitt, Beaufort, Warren, Halifax and Wilson which are the northeastern North Carolina counties through which the Tar River and feeder creeks flow.

Email articles to [sadowski@pbtcomm.net](mailto:sadowski@pbtcomm.net) or mail:

Janet Sadowski  
2019 Calks Ferry Road  
Lexington, SC 29073

## IMPORTANT DON'TS

### CURTISS

Handbook on Setting Up  
And Caring for the  
Curtiss Aeronautical Motor  
Model OX  
Copyright, 1916 by  
Curtiss Aeroplane and Motor  
Corporation

Don't forget that the propeller is the business end of the motor; treat it with profound respect—especially when it is in motion.

### Important Don'ts

Don't try to start without oil, water, or gasoline; all three are vital.

Don't develop that destructive disease known as tinkeritis; when the engine is working all right, let it alone.

Don't get dirt or water into the oil.

Don't fail to stop your motor instantly upon detecting a knock, a grind, or other noise foreign to perfect operation.

Don't get dirt or water into the gasoline.

Don't try to start without turning on the switch.

## SNIPPETS

### Death Notice—

Mrs. Penelope Abington died Oct 17, 1855 Tarboro, aged about sixty and leaving no immediate family.

*The Southerner* Oct 20, 1855.

has had a very neat and artistic sign painted in his windows.

—Mr. J. Thad Garvey was very sick for several days this week, but we are glad to see him up again.

—Miss Cara Fountain is visiting relatives at Wilmington.

[*The Little Clipper*, Rocky Mount, NC, November 3, 1885]

—Mr. W. H. Griffin has his fine trotter, George H. at the Raleigh Fair this week.

—Mr. Jno. R. Underwood



## SARAH ELVER LILES—FROM A PICTURE POSTCARD TO A PORTRAIT

**Sarah Elver Liles** was born 9 November 1890 southeast of what would become **Middlesex**. She was the daughter of **William Liles** and **Martha (Pattie) Eure**.

Between 1909 and 1913 Miss Liles traveled to New Bern and had her photograph taken at the beach in the form of a picture postcard. (See front and back photographs at right) She is fifth from the left in the photograph with the "x" marked under her picture.

We assume she was at least 18 years old to be allowed on such an excursion from rural Nash County to go to the beach and that would make the postcard

no earlier than 1909. She was still single when she commissioned her portrait from the card so that would make the card no later than 1913 when she married.

On the alternate side of the postcard are instructions for extracting the image for printing as an individual portrait. The instructions read:

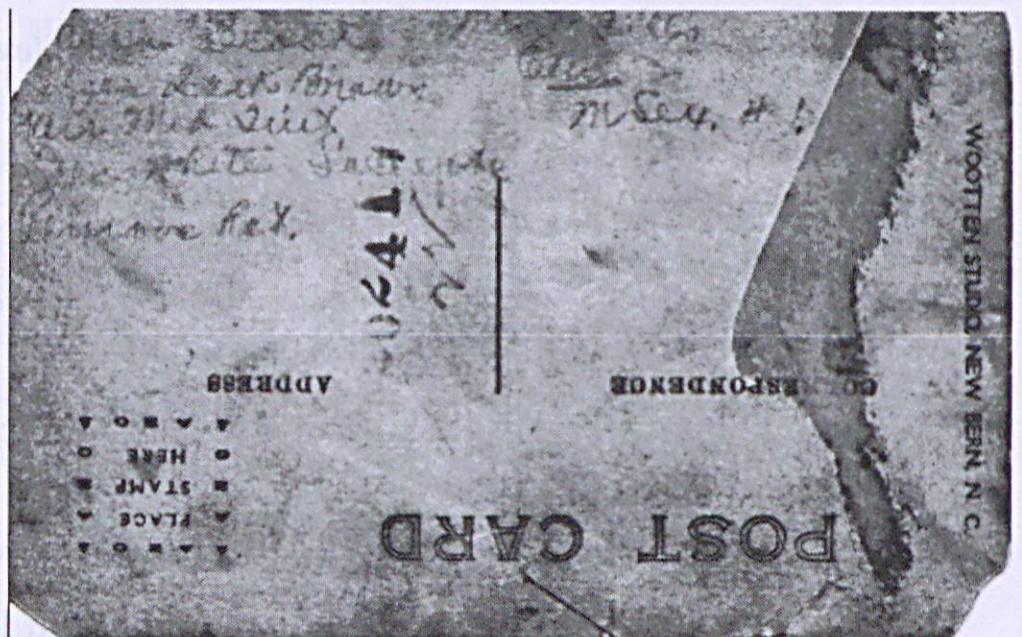
Hair black  
Eyes dark brown  
Fair med tint  
Dress white lace yoke  
Remove hat

The right column identifies her as Miss Liles Elver  
MSex#1  
(Middlesex #1)

Sarah married widower **Aaron (Amos) Ebra Carter** on 12 January 1913. They share-cropped a succession of farms in Wake and Johnston Counties, moving into Zebulon after World War II. They had six children, five of whom survived to adulthood and raised families of their own.

Sarah died 1 September 1969 in Durham County.

Sarah Elver Liles Carter is the grandmother of TRCGS Member **Larry Rhodes** who is in posses-



sion of the picture postcard and who submitted the information for this article.

The identities of the other five persons pictured are unknown. It is most likely that all or most of them are from Nash County, since it is unlikely that an unmarried young lady would travel from Nash County to New Bern alone.

If you can identify one of the other people in the photograph, please contact Larry at:

Larry Rhodes  
100 Olde Eastwood  
Village Blvd  
Apt 108  
Asheville NC 28803-1677  
[lrho@charter.net](mailto:lrho@charter.net)



Portrait of Sarah Elver Liles Carter from postcard



## BRASWELL LIBRARY: NEW LOCAL HISTORY/GENEALOGY BOOKS

*Wake County, NC Mill Records, 1772-1872* by Stewart E. Dunaway

*Wake County, NC Divorce Records, 1831-1952: Surnames A-M* by the Wake County Genealogical Society, Inc.

*Wake County, NC Apprentice Bonds, 1770-1860, 1872-1903* by the Wake County Genealogical Society, Inc.

*Edgecombe County, NC Mill (1760-1796) and Bridge Records (1787-1867)* by Stewart E. Dunaway

*Edgecombe County, North Carolina Church Cemeteries, Volume 2* by the Edgecombe County Genealogical Society

*Nash County, NC Mill Records, 1782-1875* by Stewart E. Dunaway

*Bute County, NC County Records: Road, Bridge, Mill Petitions and Tavern Bonds, 1765-1779* by Stewart E. Dunaway

*Gates County Marriage Record Books, 1851-1882* (three volumes in one) by David Powell

*Late Nineteenth Century Gates County Marriages, 1883-1900* by David Powell

*Court Minutes of Hertford County, 1845-1849* by David Powell

*Record of Accounts and Inventories of Hertford County, NC, 1838-1840* by David Powell

*Records and Remembrances of Hertford County, North Carolina: a Compendium* by David Powell

*Hertford County, North Carolina Wills, 1830-1856* by Sandra Lee Almasy

*Hertford County, North Carolina Wills, 1857-1868* by Sandra Lee Almasy

*Hertford County, North Carolina Wills, 1868-1896* by Sandra Lee Almasy

*Hertford County, North Carolina Wills, 1896-1921* by Sandra Lee Almasy

*Marriage Licenses of Northampton County, 1863-1875* by David Powell

*Northampton County, NC Mill and Ferry Records, 1786-1867* by Stewart E. Dunaway

*Family Sketches by Benj. B. Winborne: A Collection Pertaining to the Baker, Perry, Vaughan, Win-*

*borne, and Wynn Families* compiled by David Powell

*Diary of 1825* by Dr. Thomas O'Dwyer of Murfreesboro, NC edited by David Powell

*North Carolina 1890 Civil War Veterans Census* by Sandra Lee Almasy

*The History of Grist Mills in North Carolina, Volumes 1-4* by Stewart E. Dunaway

*Sketches of Prominent Living North Carolinians* by Jerome Dowd (1888)

*Settlers of Maryland, 1679-1783* by Peter W. Coldham

*U.S. Military Records: A Guide to Federal and State Sources, Colonial America to the Present* by James C. Neagles

*Your Guide to the Federal Census for Genealogists, Researchers, and Family Historians* by Kathleen W. Hinckley

*They Became Americans: Finding Naturalization Records and Ethnic Origins* by L. D. Szucs

*The Life and Times of First Baptist Church, Wilson, North Carolina: 1860-2010* by Roger A. Bullard

*The Sweet Potato Caper: A Humorous Novel* by N.W. "Red" Pope

*Known Military Dead During the American Revolutionary War, 1775-1783* by Clarence Stewart Peterson

*Colonial Families of Surry and Isle of Wight Counties, Virginia, Volume 9: The Family of George Williams, Died 1672 of Isle of Wight County, Virginia* by John A. Brayton

*Colonial Families of Surry and Isle of Wight Counties, Virginia, Volume 10: Bridger of Godalming, Surrey; Slimbridge, Gloucestershire; and Virginia* by John A. Brayton

*Order of the First Families of North Carolina: Registry of Ancestors, Volume 2: The Descendants of John (d. 1692) and Thomas Williams (d. 1693) of Isle of Wight County, Virginia* by John A. Brayton

*Marriages of Some Virginia Residents, 1607-1800* (4 volumes) by Dorothy Ford Wulfeck

Submitted by Traci Thompson, Local History/Genealogy Librarian, Braswell Memorial Library, Rocky Mount, NC



## THOMAS VIVERETTE FAMILY

The homestead site of **Thomas Viverette** is located on the old Tarboro and Raleigh road about eight miles west of Rocky Mount, N.C., and on the south side of the Tar River. The lands extended from the river to the road and beyond.

The house in which the family lived was located on a knoll beside the road. About midway between the house and the river was a burying ground, where several generations of the Viverette families were buried.

The house in which Thomas reared his family may have been replaced by another which the author believes was built by his son **James** shortly after James' marriage in 1803. James probably reared his family there. James' daughter **Elizabeth** married **Andrew Jackson Williams** whose son **Micajah Tood Williams** reared his family there also. Once there was the date 1847 on the chimney.

James, youngest son of Thomas Viverette, acquired a large area of land east of that owned by the Williamses. A part of James' land was sold to his son, **Andrew Jackson**

**Viverette**, who bought large tracts that previously were sold by James to others.

Andrew Jackson Viverette established his homestead on a part of what formerly was James' land. The author believes the house was built about 1853. Nearly all of Andrew Jackson's children were born and reared there. The original house has undergone a few changes but the main body of the structure still remains. It has four rooms and piazza on main floor with two rooms on second floor and a cellar underneath the whole house. The kitchen with a very large fireplace and a dining room attached were in a separate building in the back yard as was the custom in that period and area.

After the family grew in size it became necessary to provide more rooms so a shed of two more rooms was built on the back of the house. When all the children had married and Jackson had died, **Dock**, the youngest son, who continued to live with his mother, **Rhoda**, removed the shed portion at the back and built an ell with an L-porch in its place. Later



still, the kitchen and dining room was moved nearer the house and connecting porches built between them. Dock reared his family in this building after the remodeling. In recent years the back porches were enclosed with translucent materials and winterized to some extent. The house is now at the edge of an airport runway extension, which crosses the land.

The Author first saw the light of day November 28, 1894, in the original building before it was remodeled.

Jackson Viverette's family is buried at **Mill Branch Baptist Church** two miles to the east.

From the John Randle Jordan/  
Fannie Lillian Viverette Family  
book by Luther Jordan. Submitted by TRCGS Member Debbie Peacock.



## FREE WEB SITES

We asked our members for suggestions on free web sites they have used to gather information. Here is a list for your browsing pleasure. Thank you to those that contributed.

DESCRIPTION	WEB SITE ADDRESS
Cemetery records	<a href="http://www.findagrave.com">www.findagrave.com</a>
Cemetery records (North Carolina specific). Gives coordinates and a map link. Another great place to contribute cemetery information.	<a href="http://cemeterycensus.com/nc/">http://cemeterycensus.com/nc/</a>
Gravestone Symbolism	<a href="http://www.graveaddiction.com/symbol.html">www.graveaddiction.com/symbol.html</a>
Library of Congress	<a href="http://www.loc.gov">www.loc.gov</a>
The American Civil War	<a href="http://sunsite.utk.edu/civil-war/warweb.html#roster">http://sunsite.utk.edu/civil-war/warweb.html#roster</a>
You can now search the DAR website - by ancestor or descendant. These are proven lineages.	<a href="http://www.dar.org">www.dar.org</a>
Civil War - official records pertaining to the Civil War	<a href="http://digital.library.cornell.edu/m/moawar/waro.html">http://digital.library.cornell.edu/m/moawar/waro.html</a>
NC Live - you must obtain password from one of the North Carolina libraries	<a href="http://www.nclive.org">http://www.nclive.org</a>
PDF Online - convert documents from your program to a PDF file so others can read (but not change) using Adobe Acrobat Reader	<a href="http://www.pdfonline.com/convert-pdf/">www.pdfonline.com/convert-pdf/</a>
Yahoo groups - look for "Genealogy" and family surname or area they lived.	<a href="http://groups.yahoo.com/">http://groups.yahoo.com/</a>
Blog by our own Peggy Strickland with stories about Northeastern Counties of North Carolina	<a href="http://www.northeasternncstories.blogspot.com/">www.northeasternncstories.blogspot.com/</a>
North Carolina GenWeb Project - The starting place for all North Carolina counties.	<a href="http://www.ncgenweb.us/">http://www.ncgenweb.us/</a>
Links to North Carolina books	<a href="http://www.genealogybooklinks.com/north_carolina.htm">http://www.genealogybooklinks.com/north_carolina.htm</a>
Grave Dowsing	<a href="http://www.tommymarkham.com/gravedowsing.htm">http://www.tommymarkham.com/gravedowsing.htm</a>
Bertie County Postal History	<a href="http://www.postalmuseum.si.edu/statepostalhistory/Bertie%20County.pdf">http://www.postalmuseum.si.edu/statepostalhistory/Bertie%20County.pdf</a>
Digital Library on American Slavery	<a href="http://library.uncg.edu/slavery/pSearch.aspx?s=2">http://library.uncg.edu/slavery/pSearch.aspx?s=2</a>
Isle of Wight, Virginia	<a href="http://vagenweb.org/isleofwight/">http://vagenweb.org/isleofwight/</a>
Irish Genealogy	<a href="http://www.irishgenealogy.ie">http://www.irishgenealogy.ie</a>
Black Sheep Ancestors	<a href="http://www.blacksheepancestors.com/index">http://www.blacksheepancestors.com/index</a>
London's criminal trial and court	<a href="http://www.oldbaileyonline.org/index.jsp">http://www.oldbaileyonline.org/index.jsp</a>
Collection of funeral cards and plates	<a href="http://www.genealogytoday.com">http://www.genealogytoday.com</a>



(Continued from page 1)

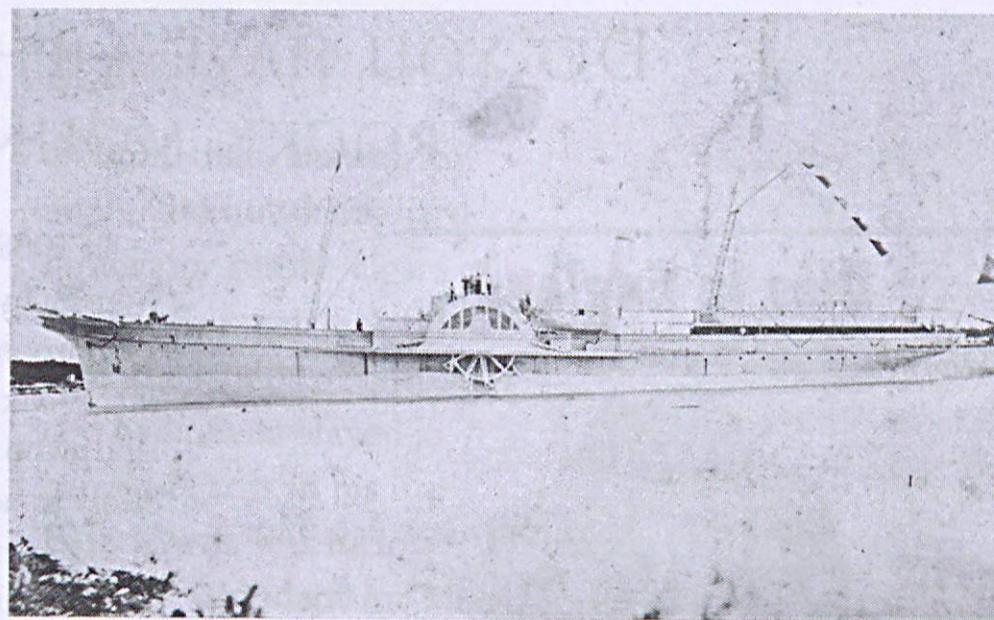
for one. **John White**, a Scotsman, who settled in Warren County as a merchant and married **Priscilla Della Jones**; became commissioner of the state in England, borrowing money for the southern cause and securing credit on state warrants payable in cotton and other commodities. These goods were delivered to the ports in Wilmington and shipped out by blockade runners and used to purchase supplies for the war effort. These supplies were then delivered to Wilmington by the blockade runners. With a loan from a British firm, White bought North Carolina's first blockade runner, a 230 foot schooner-rigged, sidewheel steamer built at **Greenock, Scotland** and launched on July 3, 1862; christened "**Lord Clyde**" and used as a packet until being bought in the spring of 1863. It was converted with a high-pressure boiler in Scotland and after modifications, was capable of twenty knots speed and carrying 600 to 800 bales of Cotton. White renamed it **Advance** in honor of Governor Vance.

The initial running of the Union Blockade occurred on June 26, 1863,

when a cargo from Liverpool was landed in the state. Governor Vance made a visit to Wilmington to see his "namesake" and was criticized for requesting it not stop at the yellow fever quarantine station which was near **Fort Anderson** in the Cape Fear, but come straight to the docks.

The **Advance** made more than 20 highly successful voyages and 40 close calls with union ships standing blockade watches. Her courageous Captain **Thomas M. Crossan**, an officer of the North Carolina navy, made his arrivals and departures from Wilmington and Bermuda with "time-table" regularity, boldly ran through in broad daylight on one occasion. During these runs 2,516 bales of cotton, naval stores and tobacco were delivered to England, returning with much needed supplies and commodities to troops and North Carolina.

On September 10, 1864 returning to sea from Wilmington, burning poor quality coal and running too slowly she was overtaken by the **USS Santiago de Cuba** and taken into the US Navy and served as the **USS Advance** until June 1865 was then renamed **USS Frolic**. Running the block-



Advance 1863



USS Frolic 1865-1869

ade for a little more than a year; she contributed much to the troops and the welfare of the war-harassed state. The loss of the **Advance** was a blow to North Carolina's war efforts. It is ironic that the Cape Fear Inlet she ran into many times, was now one she would shield from other runners, as she was now part of the union blockading squadron of the US Navy. As a testimonial of the quality of Scottish ship building the **USS Frolic**

served the federal government in the northern european waters, the Mediterranean, North Atlantic and South American waters until October 1877. She was sold in October 1883 and was a civilian ship, retaining the name **Frolic**, for a few more years.

Submitted by TRCGS Member  
A. Wallace Abernethy



## DO YOU HAVE A PHOTOGRAPH OF THIS ROCKY MOUNT WAR HERO?

### Dies In England



MERCER W. AVENT

### Lt. Avent, 28, Killed In Crash

#### Local Pilot Served In Carrier Squadron

First Lieutenant Mercer Wilson Avent, 28, husband of the former Miss Lillian Bell and son of Mr. and Mrs. J. B. Avent of this city, was killed in a plane crash in England on October 25, the War department has notified his family.

First pilot on a C-47, Lt. Avent was a member of a troop carrier squadron. He has been stationed in England, North Africa and Italy and was in action over France, Belgium, Holland and Italy. Among his service awards are the Air Medal with two Oak Leaf Clusters and the Presidential Citation.

In 2008, Local History/ Genealogy Librarian Traci Thompson was contacted by Mr. Frank Phillipson of England, who is involved in an effort to honor the memory of the men who died in an overseas airplane crash during World War II. Mr. Phillipson was looking for a picture of **Mercer W. Avent** of Rocky Mount, who was the pilot of the ill-fated *Lilly Bell II*.

After two years of frustrating research, no photograph of Mercer Avent has been found. The picture accompanying this *Telegram* was destroyed along with 85% of WWII personnel records in a 1973 fire.

Lt. Avent entered the Army in July, 1941, and received his wings from the Army Airfield at Altus, Okla. While he was in this country he was stationed at various airfields, including San Antonio, Texas, Sedalia Airfield, Mo., Laurinburg-Maxton Field, Baer Field, Ind., Albuquerque, N.M., and Barksdale Field, La.

Born October 17, 1916, in Wilmington, Lt. Avent attended Benvenue high school, where he played basketball, and prior to going into service was employed by Swift and Company. On December 24, 1943, he married Miss Lillian Bell, daughter of Mr. and Mrs. Floyd A. Bell of Rocky Mount, in the Post Chapel at Fort Bragg.

Surviving Lt. Avent are his wife; his parents; one brother, J. B. Avent, Jr., USCG, who is

Efforts to track and obtain a photo from living relatives has been unsuccessful.

A memorial to the men who lost their lives in this tragedy is scheduled to be unveiled in England in October of this year. Photographs of all the men involved have been found except for the pilot from our own town.

Don't let our war veteran be forgotten! Please help us find a picture of Mercer W. Avent so his memory can be honored. If you can be of help, please contact Traci Thompson at 252-442-1951 ext 247 or [tthompson@braswell-library.org](mailto:tthompson@braswell-library.org) or [genieprincess@gmail.com](mailto:genieprincess@gmail.com)

More information about the fatal flight of the *Lilly Bell II* can be found at [http://www.getsurrey.co.uk/Community/yesteryear/s/2043171\\_fatal\\_flight\\_of\\_Lilly\\_bell\\_ii\\_is\\_finally\\_revealed](http://www.getsurrey.co.uk/Community/yesteryear/s/2043171_fatal_flight_of_Lilly_bell_ii_is_finally_revealed).

now in Boston, Mass., after overseas duty and who is expected to arrive here today; two uncles, T. A. Avent and J. F. Avent of Rocky Mount; and two aunts, Miss Mattie Avent of Rocky Mount and Mrs. Jim Gray Henry of Spring Hope.

*Rocky Mount Evening Telegram,*  
November 1944



## THE CASE OF THE MISTAKEN IDENTITY

Warrenton, NC

Prior to the **War Between the States** gaming houses were the norm in most areas of the country, **Warrenton, Warren County, NC** was no exception. Such was the case when a well known gentleman, **Peter Davis**, turned a home into an open gaming house near the courthouse. Men could come and go as they pleased. The front room was turned over to players who wanted to play cards for high stakes. Women were not allowed. Mr. Davis never married but he hailed from one of the most distinguished and wealthiest families in the county. Gambling was one of the main social customs of the day.

Needing a large number of hogsheads for his tobacco crop, Davis sent

his attendant and slave, **Grandison**, to approach a certain busy corner in town during a term of Superior Court to find **Mr. Kimball**, a hogshead maker. Peter Davis could not leave himself with a high stakes game in progress. Grandison was to escort the man to Davis' room when he found him. Grandison receiving the order replied, "I don't know Mr. Kimball", whereupon he was told to look for the ugliest man in Warren County. Shortly thereafter, Grandison returned with a gentleman grumbling and demanding an explanation to why he was escorted into a gambling room where decanters filled with all sorts of liquor, sugar and water were displayed on the sideboard. **Mr. Sol Stallings**, the gentleman escorted in by Grandison, demanded

an immediate answer saying he did not drink hard liquor nor smoke cigars of which the room was filled with the smells of both, and had never played a game of cards in his life. Peter Davis was furious with his attendant for making such a mistake. Grandison explained, "Master, I told you I did not know Mr. Kimball and you told me to go out and bring to you the ugliest man in the county, and I have done the best I could". Looking completely dumbfounded Mr. Stallings turned on his heels after saying a few choice words and made an abrupt exit from the establishment.

Source: *Sketches of Old Warrenton North Carolina*, by Lizzie Wilson Montgomery, Pub. 1924, reprint 1984

Submitted by TRCGS Member Billie Jo Matthews.



**Reduce Your Flesh**  
by wearing  
**Dr. Walter's Reducing Rubber Garments**  
For Men & Women  
Cover entire body or any part. Send for Illustrated Booklet.

**Dr. Jeanne A.C. Walter**  
353 Fifth Ave., N. Y.  
Billings Bldg., 4th fl.  
(Ent. 34 St., 3d Door E.)


Bust Reducer, \$5.50  
Chin Reducer, \$2.00



**CREATING CHARM**

Is the real accomplishment of the facial wonder-worker. Dr. Campbell's Safe Arsenic Complexion Wafers. These wafers are beauty's first sincere aid—adding charm, while doing away with all possible harm. The wonder-wafers build one up, clear the skin quickly and bring out all charms. Thoroughly guaranteed safe and non-habit forming.

50c and \$1.00 per box mailed in plain cover on receipt of price from **RICHARD FINK CO.** 396 Broadway, N. Y. Every druggist can get these wafers for you from his wholesale dealer.



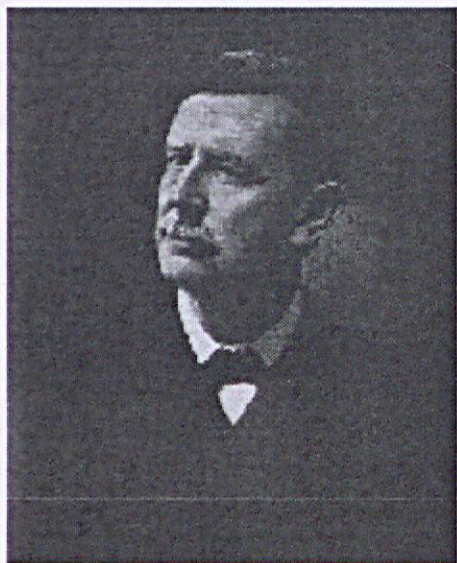
**Ladies Shoes**

All leathers are represented. All styles are here, French Heels, Military Heels, Cuban Heels, Blacks and some shades:

\$3.50 Shoes	\$2.80
\$4.50 Shoes	\$3.60
\$5.00 Shoes	\$4.00
\$6.00 Shoes	\$4.80
\$7.50 Shoes	\$6.00
\$8.50 Shoes	\$6.80
\$10.00 Shoes	\$8.00
\$12.50 Shoes	\$10.00
\$13.50 Shoes	\$10.80



## WILLIAM JAMES SAMFORD, GOV. OF ALABAMA



William James Samford,  
Governor of Alabama



Caroline Elizabeth  
Drake Samford

**William James Samford**, lawyer, 31st Governor of Alabama, was born September 16, 1844, at Greenville, Ga., and died June 11, 1901, at Montgomery; son of **William Flewellyn** and **Susan Lewis (Dowdell) Samford**. Governor Samford died only six months after assuming office. He was a lawyer and politician who rose rapidly in Alabama politics during the turbulent and complex post-Civil War era.

Governor Samford showed a particular interest in historical, patriotic, and literary work in various ways. He delivered many literary addresses and lectures before the leading

educational institutions of Alabama and other Southern states; was a contributor to various periodicals and magazines; and ranked as one of the foremost orators of the State. He was a Mason, Knight of Pythias, a member of the American Legion of Honor, and of the Alabama Historical Society. During his gubernatorial service, he aided in bringing about the establishment by the legislature of the Department of Archives and History. Married: in October, 1865, to **Caroline Elizabeth Drake**, daughter of **Dr. John Hodges** and **Polly Richard Susan (Williams) Drake**, who lived at Auburn, but came there from Nash County,

N. C.; granddaughter of **James Drake** of Nash County, N. C., who served in the Revolutionary War; great-granddaughter of **Major John Williams**, who was an officer in the Revolutionary War; great-great-granddaughter of **Arthur Forbis**, an officer in the Revolutionary War, who was killed at the battle of Gullford Court House, and has a monument to his memory on the battlefield.

Sources: *History of Alabama and Dictionary of Alabama Biography* By Thomas McAdory Owen, Marie Bankhead Owen 1921; *Encyclopedia of Alabama* (<http://www.encyclopediaofalabama.org/face/Article.jsp?id=h-2015>) Submitted by TRCGS Member J. Sadowski

(Continued from page 1)

20 minutes past 8 and Chief Stallings called for Norman Lewis to come to the door. Lewis said: "Chief, let me put on my shoes; I am barefooted." He put on his shoes, and delayed in the house some 20 or 25 minutes. Chief said "Norman, come to the door, I'm in a hurry." To which Norman replied "I'm not coming. Some of them damn negroes have been telling lies on me. You have got a warrant for me,

and I'm not coming." The Chief said: "Come on; I am sort of in a hurry." Norman then spoke to his wife, saying: "**Siddie**, open that there door." Just then the light in the house went out, the door flew open, and Norman Lewis fired a shotgun directly into the breast of Chief Stallings, inflicting a fatal wound, from which he died on the third day thereafter. Lewis then escaped by the back door, and fired a shot back at the posse as he went off. He fled to Louisburg where he

was apprehended. He was then taken to the Wake County Jail to prevent him from being lynched.

Chief Stallings was taken to his home and examined by a doctor. The following day he was driven to a hospital in Richmond, Virginia, where he remained until succumbing to his wound. The suspect was convicted of Chief Stallings's murder and sentenced to death. He was executed in the electric chair on May 12, 1911.

Chief Stallings was survived by his wife Mary and five children. He was also survived by his parents and his brothers **John N. Stallings**, **Joseph S. Stallings**, **William A. Stallings** and sister, **Carrie M. Moore** wife of **Jefferson Moore**.

Sources: Officer Down Memorial Page, Inc., PO Box 1047, Fairfax, VA 22038-1047; State v. Lewis Supreme Court of NC March 15, 1911; *The Southeastern Reporter*, Volume 70, pp 618-622. Submitted by TRGS Member Callie J. Stallings



## CEMETERY DIVISION

The Cemetery Division of the Rocky Mount Parks and Recreation Department is responsible for maintaining burial records and providing overall maintenance for the Pineview, Battleboro and Northeastern Cemeteries.

Mrs. Linda Sawyer Moore, Cemetery Supervi-

sor, was our speaker during the June 2010 meeting and has provided several lists which will be of interests to our readers. She is also one of our own and a long time member of Tar River Connections Genealogical Society.

We look forward to sharing this information

with you in this issue as well as upcoming issues.

Thank you Mrs. Moore for your time and the information you have provided.

For further information contact Linda S. Moore at (252) 972-1158.



Linda Sawyer Moore  
Cemetery Supervisor  
and TRCGS Member

### City of Rocky Mount Cemetery Division

#### Burials Prior to 1900—Battleboro Cemetery

Birth	Death	Last Name	First	Middle	Maiden	Section	Row	Lot	Loc	Owner
6/2/1826	2/22/1892	GORHAM	MARY	E.		AREA-2	0	40	13	GORHAM
5/4/1809	1/26/1889	GORHAM	MEHITABLE			AREA-2	0	40	11	GORHAM
1866	1894	MASON	MARY	E.	POPE	AREA-2	0	51	9	MASON
7/11/1852	6/27/1889	MOORE	ELLA	JANE		AREA-3	0	68	2	MOORE
4/14/1850	5/31/1891	THOMAS	A.	C.		AREA-3	0	69	1	GREEN
7/31/1879	5/23/1880	WEEKS	MARY	BELL		AREA-1	0	3	10	WEEKS
6/15/1841	11/2/1883	WEEKS	WILLIAM	SILAS		AREA-1	0	3	9	WEEKS
4/27/1854	2/1/1895	WELLS	BETTIE	E.		AREA-3	0	70	2	WELLS
1882	1885	WELLS	LUCY	LEWIS		AREA-2	0	46	14A	WELLS
7/10/1833	10/19/1884	WELLS	THEOPHILUS	BRYAN		AREA-2	0	46	16	WELLS
11/17/1844	2/23/1891	WILLIAMS	COOPER			AREA-2	0	52	1	WILLIAMS
2/10/1874	9/15/1890	WILLIAMS	JAMES	W.		AREA-2	0	52	3	WILLIAMS

(Continued on Page 12)

# Genealogy Without Sources is Mythology



## Burials Prior to 1900—Pineview Cemetery

There are a few references in Pineview burials that are not consistent with the section in which they are interred. Under the "Section" column, when reference is made to Sections 10, 11, 13, 24, 30, 31, 33, 34, 40, 43, 48, 49, 50 and 53 these apparently represent burials that were moved from another cemetery to Pineview as these sections were not open and available prior to 1900.

Birth	Death	Last Name	First	Middle	Maiden	Section	Row	Lot	Loc	Owner
	1888	ADAMS	EUGENE			4	B	B	9	FOUNTAIN
1790	1849	ARMSTRONG	MARTHA	ANN		2	B	24	7	ARMSTRONG
9/6/1848	5/16/1850	ARMSTRONG	WALTER	C.		2	B	24	6	ARMSTRONG
	7/5/1889	ARRINGTON	BABY			4	E	E	4	HAMMOND
	1891	ARRINGTON	JOSEPHINE			4	E	E	3	HAMMOND
10/24/1863	8/27/1897	AVERA	FLORIDA	ANN	TAYLOR	2	B	22	1	ARRINGTON
1854	1890	AVERA	H.	D.		4	F	1	5	AVERA
1887	1889	AVERA	H.	D.		4	F	1	8	AVERA
1862	1899	AYCOCK	WALTER	HENRY		11	0	1	8	MCCALL
1831	1867	BASSETT	CHLOE		MILLER	2	C	22	2	BASSETT
1866	1867	BASSETT	CHARLES	THOMPSON		2	C	22	3	BASSETT
1863	1864	BASSETT	JOHN	THOMPSON		2	C	22	8	BASSETT
1859	1860	BASSETT	MOLLIE			2	C	22	4B	BASSETT
1857	1864	BASSETT	SARAH	DAVIS		2	C	22	4A	BASSETT
1855	1887	BASSETT	THOMAS	CLIFFORD		2	C	22	5	BASSETT
1826	1885	BASSETT	WILLIAM	AMOS		2	C	22	1	BASSETT
12/6/1896	10/20/1897	BATCHELOR	MARY	LILLIE		2	C	21	8A	BATCHELOR
10/3/1841	6/4/1891	BATTLE	GEORGE	CULLENS		31	0	27	8	BATTLE
5/11/1829	10/3/1865	BATTLE	JAMES	P.		2	C	25	8	SELLERS
7/18/1791	7/19/1847	BATTLE	JOSEPH	S.		2	C	25	1	SELLERS
11/18/1839	9/28/1849	BATTLE	QUEEN	A.		2	C	25	2	SELLERS
	5/25/1834	BILLUPS	DEMPSEY	F.		4	D	10	5	BILLUPS
12/3/1852	11/29/1897	BONE	ALICE			1	F	23	8	BONE
1799	1874	BRASWELL	ANZEY	LANEY	STRINGE	4	C	3	8B	BRASWELL
5/1/1866	11/13/1882	BRASWELL	EULAH			4	C	3	10	BRASWELL
9/26/1871	5/26/1899	BRASWELL	JACOB	EALY		40	0	75	5B	MELTON
12/27/1862	9/12/1863	BRASWELL	JOSEPH	M.		4	C	3	3	BRASWELL
	1/21/1881	BRASWELL	MATTIE	S.		4	C	3	9	BRASWELL
3/23/1898	2/26/1899	BRASWELL	NANNIE	CORNELIA		40	0	75	5A	MELTON
1802	1848	BRASWELL	ROBERT	R.		4	C	3	8A	BRASWELL
11/22/1874	11/10/1898	BRASWELL	THOMAS	P.		4	C	3	4	BRASWELL
9/2/1836	9/3/1890	BRITT	HENRY			4	D	4	7	BRITT
6/19/1864	4/30/1890	BRITT	TEMPIE	A.		4	D	4	8	BRITT
4/___/1890	4/___/1890	BULLUCK	BABY			2	B	25	9	BULLUCK
10/15/1891	10/15/1891	BULLUCK	BABY			2	B	25	8	BULLUCK
8/23/1819	4/___/1896	BULLUCK	DAVID	WILLIAM		4	C	7	5	BULLUCK
12/25/1821	10/27/1897	BULLUCK	MARGARET		ROUTH	4	C	7	6	BULLUCK
4/5/1887	12/10/1888	BULLUCK	MAURICE			2	B	25	1	BULLUCK
11/3/1885	10/13/1890	BULLUCK	ROSA	A.		2	B	25	10	BULLUCK
10/11/1841	7/2/1862	BUNN	ELIAS			1	E	20	9	WIMBERLEY
7/4/1834	6/19/1852	BUNN	ELIZABETH	DRUCILLA		1	E	20	11	WIMBERLEY
7/9/1814	8/12/1866	BUNN	MARY		HICKMAN	1	E	20	7	WIMBERLEY
4/5/1806	8/14/1883	BUNN	REDMUN			1	E	20	8	WIMBERLEY
9/19/1848	7/20/1852	BUNN	SARAH	ROSA		1	E	20	12	WIMBERLEY
1/6/1833	10/27/1864	BUNN	WILLIAM	HENRY		1	E	20	10	WIMBERLEY
6/3/1850	7/4/1893	BURNETTE	VIRGINIA		SHORT	4	A	2	7	SHORT
1822	1872	BURROWS	MARGARET	M.		1	E	20	5	WIMBERLEY
1802	1867	BURROWS	STEPHEN			1	E	20	6	WIMBERLEY
1/7/1838	3/1/1883	CALHOUN	WILLIAM	J.		53	6	14	1	LUPTON



Birth	Death	Last Name	First	Middle	Maiden	Section	Row	Lot	Loc	Owner
1/6/1837	12/23/1884	CHAPMAN	HELEN	B.	GRAY	4	D	D	6	CHAPMAN
9/19/1838	3/5/1891	CONYERS	MARGARET	A.		4	B	2	7	CONYERS
9/3/1878	8/11/1880	CRUMPLER	ALICE	ETHEL	NAOMI	2	B	24	8	ARMSTRONG
10/13/1877	7/16/1895	DANIEL	CHARLEY	JACKSON		3	F	10	2	DANIEL
1/2/1897	1/27/1897	DAUGHTRIDGE	ANNIE	LOUISE		1	E	25	5	DAUGHTRIDGE
1887	1891	DAUGHTRIDGE	EDDIE	T.		4	F	4	2	DAUGHTRIDGE
7/12/1896	8/13/1897	DAUGHTRIDGE	JESSIE	JENNINGS		4	E	8	7	DAUGHTRIDGE
10/18/1878	6/11/1899	DAUGHTRIDGE	LIZZIE			4	B	8	6	DAUGHTRIDGE
8/12/1888	1889	DAUGHTRIDGE	MARY	LENA		4	E	3	5	DAUGHTRIDGE
8/12/1898	11/2/1898	DAUGHTRIDGE	WILLIAM	EDY		2	G	G	1	DAUGHTRIDGE
1/6/1828	1/18/1894	DAUGHTRIDGE	WILLIAM	MITCHELL		2	E	7	6	DAUGHTRIDGE
8/20/1855	5/18/1899	DAUGHTRIDGE	Z.			4	E	3	2	DAUGHTRIDGE
11/12/1805	1/6/1880	DAUGHTRY	PRICILLA			4	A	4	8	GRIFFIN
4/14/1809	4/20/1880	DAUGHTRY	REDDIN			4	A	4	9	GRIFFIN
9/23/1856	11/6/1892	DAUGHTRY	SALLIE		MERCER	4	B	4	5	DAUGHTRY
1/6/1867	7/10/1893	DAVENPORT	DAVID	FREDERICK		2	D	23	8	DAVENPORT
3/3/1875	2/18/1898	DAVENPORT	MAGGIE			4	A	12	5	DAVENPORT
1/1/1848	10/22/1895	DICKENS	ALMETA			2	D	21	5	DICKENS
6/6/1858	6/9/1888	DILLARD	WILLIAM	WARREN		2	F	25	5	DILLARD
1/18/1893	12/11/1893	DIXON	DAVID	WILLIAM		4	F	F	8B	DIXON
9/10/1808	10/21/1882	DIXON	GEORGE	R.		4	F	F	1	DIXON
6/11/1864	11/5/1898	DOWNING	CARA		FOUNTAIN	1	F	22	3	DOWNING
6/26/1877	1/26/1895	DUNCAN	MARTHA	A.		4	E	10	5	DUNCAN
7/15/1892	7/22/1893	FARMER	MABLE			4	D	7	7	FARMER
7/3/1891	12/26/1896	FLETCHER	EXUM			3	F	12	8	FLETCHER
6/24/1827	6/30/1891	FORT	JACOB	G.		4	C	2	4	TAYLOR
9/8/1885	11/1/1888	FOUNTAIN	HELEN	ELIZABETH		4	B	B	8	FOUNTAIN
4/4/1858	6/28/1897	FOUNTAIN	IRENE	MILDRED	HENDREN	1	F	24	6	FOUNTAIN
1/15/1878	8/10/1878	FOUNTAIN	MARY			4	B	B	5	FOUNTAIN
2/25/1820	3/26/1878	FOUNTAIN	SPENCER			4	B	B	1	FOUNTAIN
6/13/1826	4/28/1899	FOUNTAIN	WILLIAM	EDWARD		4	B	B	10	FOUNTAIN
5/10/1840	2/10/1896	FREEMAN	MARY	ELIZA		4	D	8	5	FREEMAN
1868	1896	GARRATT	JOSEPH	J.		4	C	4	4	HILLIARD
11/30/1828	3/14/1891	GARVEY	A.	J.		4	D	2	5	GARVEY
9/9/1896	6/8/1898	GARVEY	BERTHA	MATILDA		4	D	3	5	GARVEY
12/5/1886	1/4/1890	GARVEY	GERTRUDE			4	D	2	7	GARVEY
9/1/1831	3/8/1889	GARVEY	JAMES	T.		4	D	2	6	GARVEY
1829	4/12/1879	GARVEY	MARGARET			4	D	2	8	GARVEY
1/17/1851	5/7/1882	GATLIN	LUCY	GREY	PORTER	4	F	12	5	GATLIN
4/29/1854	10/2/1889	GAY	JAMES	ELLEN		4	E	1	6	GAY
8/10/1830	8/10/1882	GAY	JOHN			43	0	61	7	JACKSON/ GRAY/ WOODRUF
9/16/1891	7/22/1894	GAY	LOTTIE	MAY		33	0	4	8	GAY
9/1/1803	10/1/1882	GAY	MARTHA			43	0	61	5	JACKSON/ GRAY/ WOODRUF
1832	1882	GIBBS	THERESA			4	F	F	5	DIXON
1/7/1846	9/27/1884	GORDON	EDWARD	STUART		24	0	9	4	GORDON
1/1/1861	1/1/1884	GORHAM	ETTA		JENKINS	48	0	272	3	GORHAM
3/6/1809	9/26/1848	GOWAN	GEORGE			13	0	15	1	OWNER
11/27/1891	11/3/1892	GRAVELY	LOUISE			4	D	6	5	GRAVELY
8/7/1897	5/9/1899	GRAVELY	RODERICK	NEY		4	D	6	6	GRAVELY
11/4/1820	12/20/1884	GRAY	MARY	E.		4	D	D	5	CHAPMAN
3/12/1836	10/31/1893	GREEN	WILLIAM	ENOS		4	D	9	6	GREEN
7/22/1827	2/24/1894	GREEN	WINIFRED	M.	MOORE	4	D	9	7	GREEN
10/15/1824	4/3/1895	GRIFFIN	T.	H.		4	A	4	5	GRIFFIN
9/30/1877	3/22/1899	GUPTON	ANNIE	LAURIE		1	F	21	8	GUPTON
10/20/1888	10/9/1890	GUTHRIE	ANNIE			4	A	1	5	GUTHRIE
11/17/1859	1/14/1893	GUTHRIE	LIZZIE			4	A	1	7B	GUTHRIE
6/10/1891	1/14/1893	GUTHRIE	MARY	THORNE		4	A	1	7A	GUTHRIE



Birth	Death	Last Name	First	Middle	Maiden	Section	Row	Lot	Loc	Owner
1/22/1897	6/18/1897	HALES	LEAH			1	D	25	5	HALES
10/22/1829	7/4/1879	HAMMOND	GRAY	WILLIS		4	E	E	5	HAMMOND
11/22/1833	1/20/1886	HAMMOND	LOUISA	J.	WHITE	4	E	E	6	HAMMOND
1/1/1890	1/26/1899	HARDISON	WILLIAM	J.		1	D	24	8	HARDISON
10/2/1861	10/25/1883	HART	HELEN	DELHA	DAUGHTRIDGE	4	D	1	5	HART
5/13/1863	2/27/1890	HART	MARION	WEDDELL		4	D	1	2	HART
2/28/1888	10/2/1889	HART	MARION	WEDDELL		4	D	1	1	HART
1/6/1859	12/15/1889	HART	SPENCER	LEE		4	D	1	6	HART
5/21/1835	5/10/1890	HART	SPENCER	LEE		4	C	1	5	HART
3/24/1810	12/8/1896	HART	UNITY	PAMELIA	ANDREWS	4	C	1	6	HART
5/18/1824	3/22/1891	HART	W.	L.		3	F	1	7	HART
11/5/1892	6/9/1893	HARTGE	RUBY			2	A	24	5	HARTGE
12/15/1842	12/25/1899	HESTER	ROBERT			3	E	3	5	HESTER
4/6/1874	10/4/1874	HILLIARD	BABY BOY			4	C	4	8	HILLIARD
5/3/1872	10/4/1899	HILLIARD	JOSEPH	ALBERT		4	C	4	7	HILLIARD
12/2/1844	7/15/1899	HOLDEN	L.	J.		4	C	5	1	BRYANT
9/13/1891	6/5/1893	HORNE	JOHN	MERCER		2	C	24	5	HORNE
12/1/1899	12/11/1899	HUFFINES	WILLIAM	WHITEHEAD		1	B	24	6	HUFFINES
11/13/1826	11/15/1899	HUNTER	JOHN	H.		4	E	11	6	HUNTER
7/4/1840	3/2/1892	JACKSON	WILLIAM	HERBERT		4	E	5	5	JACKSON
4/12/1894	11/12/1899	JAMES	WILLIE	H.		2	C	21	4	BACHELOR
8/20/1873	12/20/1897	JENKINS	MATTIE	L.		2	G	12	10	JENKINS
1834	4/22/1899	JONES	JOHN			2	B	21	8	JONES
	3/11/1893	JONES	MARY	A.		7	O	22	8	PIERCE
9/10/1871	6/30/1895	JORDON	REVERDY			2	E	22	3	JORDAN
9/10/1882	10/10/1883	KERSEY	MARY	F.		4	F	9	8	KERSEY
4/23/1834	1/27/1899	LANIER	MARTHA	J.	YARBOROUGH	4	A	2	3	SHORT
10/30/1862	4/17/1898	LONG	J.	H.		13	O	15	2	
8/1/1827	7/4/1899	LONG	WILLIAM	DORSEY		1	C	15	1	KRASMER
10/4/1877	6/19/1879	MANN	LOULA	EVA		3	F	3	5	MANN
										DIXON / MAT-
11/1/1887	7/9/1888	MATTHEWS	PERRY	L.		4	E	2	8	THEWS
7/31/1884	8/15/1895	MAYO	MARY	ELIZABETH		4	C	9	5	MAYO
11/20/1893	11/25/1893	MOORE	EDWARD	C.		2	F	22	8	MOORE
7/30/1853	1/8/1897	MOORE	MARY	L.		13	O	15	4	
9/20/1890	5/20/1894	MOORE	WALTER	S.		2	F	22	7	MOORE
	11/14/1852	NEWBY	THOMAS			10	O	1	1	NEWBY
12/7/1890	11/15/1895	NOBLES	JULIA	CHERRY		2	B	23	8	NOBLES
5/28/1892	5/28/1892	ODOM	BABY			4	E	7	8	ODOM
1/19/1821	3/7/1886	PARKER	W.	W.		6	D	1	4	JONES
1757	4/12/1849	PETTAWAY	MICAJAH			4	G	5	5	WHITEHEAD
1837	1876	PIERCE	JAMES	H.		1	E	20	4	WIMBERLEY
7/11/1890	5/23/1893	POWELL	WILLIE			4	E	9	6	ARRINGTON
12/12/1897	8/18/1898	PROCTOR	BESSIE	MAY		4	F	11	9	PROCTOR
1/13/1812	4/27/1866	RAMSEY	JOSEPH			4	B	1	5	RAMSEY
3/3/1819	1/12/1873	RAMSEY	MARGARET		BUSH	4	B	1	6	RAMSEY
12/11/1878	2/16/1899	RANDOLPH	LILLIAN			4	A	6	1	SPRADLEY
8/22/1892	8/18/1895	REYNOLDS	OLIN			2	E	23	8	REYNOLDS
8/24/1892	6/13/1896	RICHARDSON	HARRY	S.		2	E	20	8	RICHARDSON
10/17/1874	12/31/1899	RIDEOUT	JOHN	W.		2	A	20	8	RIDEOUT
6/20/1896	10/26/1897	RITTER	LILLIE	BELL		2	A	22	8	RITTER
2/10/1876	7/27/1898	RITTER	MATTIE	B.		2	A	22	7	RITTER
7/19/1898	9/23/1898	RITTTER	THELMA	ARVIN		2	A	22	6	RITTER
7/27/1842	1/9/1888	ROBERTS	ELI			34	O	30	6A	ROBERTS
1/27/1874	3/13/1874	ROBERTS	JAMES	L.		34	O	30	6B	ROBERTS



Birth	Death	Last Name	First	Middle	Maiden	Section	Row	Lot	Loc	Owner
5/29/1887	2/6/1890	ROBINSON	CLYDE			18	0	6	8	ROBINSON
7/21/1873	6/25/1899	ROSE	ANNA	W.		1	B	25	9	ROSE
2/27/1896	7/4/1898	ROSE	JAMES	H.		2	F	19	4	ROSE
9/16/1850	4/22/1898	ROSE	WILLIAM	H.		2	F	19	8	ROSE
11/15/1890	4/14/1891	SADLER	EDWIN	BRYAN		2	C	23	8	SADLER
3/2/1868	5/27/1898	SADLER	MARGARET	S.		2	C	23	7	SADLER
12/15/1852	7/20/1888	SHEARIN	MARY		NEWBY	4	F	3	1	SHEARIN
1/5/1879	1/15/1879	SHINE	FRANCES	E.		33	0	34	11	SHINE
10/16/1887	7/25/1889	SHINE	WINNIFRED	F.		33	0	34	8	SHINE
1/25/1893	7/27/1893	SHORT	ALMA	A.		4	G	6	1	SHORT
7/12/1897	4/28/1899	SHORT	FLORENCE	G.		4	G	6	2A	SHORT
7/19/1897	7/21/1899	SHORT	JOHN	R.		4	G	6	2B	SHORT
	1897	SKINNER	BABY BOY			4	E	6	6	SKINNER
	1895	SKINNER	BABY BOY			4	E	6	7	SKINNER
1890	1891	SKINNER	ROBERT	E.		4	E	6	5	SKINNER
10/8/1896	7/8/1897	SMITH	ALFRED		HAYNES	1	E	24	5	SMITH
	10/3/1894	SMITH	ANDREW			1	E	24	1	SMITH
	6/9/1899	SNYDER	RITA			1	F	24	5	FOUNTAIN
	1887	SODEN	CALEB			2	E	21	8B	SODEN
	1888	SODEN	ROBERT			2	E	21	8A	SODEN
1807	1887	SORSBY	MARY			4	A	3	8	SORSBY
7/4/1828	3/2/1868	STONE	SARAH	A.	SHORT	4	A	2	6	SHORT
12/22/1860	9/29/1897	TAYLOR	JOSEPH	k.		1	C	25	6	TAYLOR
5/13/1909	3/14/1962	TAYLOR	LOUIE	ALBERT		50	0	7	2	TAYLOR
6/25/1855	12/16/1895	TAYLOR	LOU'ISA		HEATH	4	C	6	5	TAYLOR
	1886	THORPE	FRANKLIN	J.		2	D	24	8	THORPE
4/2/1894	6/28/1895	TILLERY	ALBERT	R.		2	D	25	2	TILLERY
3/17/1837	1/7/1885	TILLERY	RICHARD	C.		2	D	25	9	TILLERY
	9/12/1867	TILLERY	RICHARD	E.		2	D	25	8	TILLERY
	10/28/1895	TREVATHAN	ALPHEUS	GORNELL		2	E	24	9	TREVATHAN
9/11/1891	8/22/1892	TREVATHAN	FLEDA	AGNES		2	E	24	3	TREVATHAN
	8/23/1889	TREVATHAN	JANIE	E.		2	E	24	8	TREVATHAN
5/24/1896	1/9/1898	TREVATHAN	NINA	ELIZABETH		2	E	24	4	TREVATHAN
9/15/1867	9/26/1898	TURNER	ALETHA			2	A	21	8	TURNER
9/19/1826	12/29/1898	VAN NORTWICK	FRANCIS	L.		3	C	C	5	MATTHEWS
8/9/1869	10/7/1899	VAUGHN	MAGGIE	CHAPMAN	TILLERY	2	D	23	5	DAVENPORT
10/1/1894	7/4/1896	VAUSE	CLARENCE	HALBERT		49	0	204	4	VAUSE
10/30/1864	8/15/1892	WATSON	JAMES	W.		33	0	38	1	WATSON
6/10/1851	7/26/1894	WHITE	FRANCIS		BATTLE	4	D	5	8	WHITE
5/26/1851	5/18/1880	WHITEHEAD	BETTIE	C.		4	G	5	7	WHITEHEAD
11/30/1886	5/4/1888	WHITEHEAD	WILLIAM	H.		4	G	5	10	WHITEHEAD
3/27/1899	3/27/1899	WILLIAMS	ELIZABETH			4	D	11	9B	WILLIAMS
	12/4/1899	WILLIAMS	LORENA		O'NEAL	1	E	23	8	WILLIAMS
10/10/1858	10/21/1888	WILLIFORD	JOHN	F.		2	E	25	8	WILLIFORD
10/31/1896	9/29/1897	WILLIFORD	MEADIE		BERNARD	3	D	1	7	WILLIFORD
9/6/1894	5/25/1895	WIMBERLEY	MARY			3	E	E	2	WIMBERLEY
12/7/1845	1/4/1894	WINSTEAD	WILLIAM	ROBERT		30	0	1	8	WINSTEAD
6/29/1893	1/29/1896	WOODARD	HELEN	GRAY		4	C	C	3	ELLINGTON
12/_/1833	3/_/1870	WOODARD	VIRGINIA	C.		4	C	C	7	ELLINGTON



## ASBURY B. FINCH



Now a retired resident of Thomas county (Georgia), Mr. **Asbury B. Finch** has had a long and active career and has well earned his material prosperity and the esteem of his family and fellow citizens.

He was born in Nash County, North Carolina, on the 2nd of July, 1836. His family had been identified with North Carolina from colonial times. His grandfather, **Allen Finch**, was born in Nash county and so far as known both he and his wife spent all their lives in that vicinity. He owned and operated a farm located about forty miles from Raleigh, which was his nearest market and depot for supplies. In those days farmers bought but little at the stores, since all the household dressed in homespun, and most of the provisions were confined to what could be produced in the home locality.

**Berry Finch**, the father of A. B. Finch, was also a native of Nash county and throughout most of his active career was employed as an overseer on large plantations. He died in Nash county at the age of seventy-five years. He married **Nancy Carpenter**, who died at the age of about seventy and they

reared three sons and five daughters.

When A. B. Finch was eighteen years old he began learning the trade of cooper and this skill in handicraft gave him a steady vocation for many years of his active life. The war interrupted his work at this trade and he enlisted in Company D of the Fifth North Carolina Infantry. With this regiment he saw much arduous service in Virginia, serving under **Generals Lee and Stonewall Jackson**.

At the battle of Williamsburg he was wounded in the left arm by a minie ball, and was in the hospital sixty days. He then continued with his regiment through its campaigns and marches until September, 1864, when he was captured and was kept a prisoner at **Point Lookout**, Maryland, until the close of the war.

Returning home he resumed his trade, and with the exception of two years in South Carolina lived in Nash county until 1882. That was the date of his settlement in Thomas County, Georgia, which has been his home for the past thirty years. Here he bought a tract of timbered

land in the Boston district and pursued his regular trade while superintending the clearing away of the forest.

He is now owner of one of the most eligible farmsteads in this district, consisting of 264 acres, with 140 in cultivation, and with several sets of farm buildings. His homestead is located three and a half miles from the town of Boston, and there he and his wife live like the patriarchs of old, surrounded by their children and enjoying the fruits of a well spent life.

Mr. Finch was married at the age of twenty-five to Miss **Rhoda Williams**. They have nine children, whose names are **Polly Ann, William H., Archie, John A., James, Rosetta, Nancy Jane, Joseph H. and Stella**. All but the last named were born in North Carolina. Mr. and Mrs. Finch are earnest members of the Methodist church.

Source: A History of Savannah and South Georgia by William Harden, 1913, p. 846



## SILLS FAMILY OF CASTALIA

The Sills family came to North Carolina from Southern Virginia late in the 18th century. **David Sills, Jr.** settled on a tract of land in Nash County, NC, which he named **Belford**, after an ancestral home in England. Belford eventually grew to over six thousand acres in Nash, Franklin, and Warren counties and at one time operated its own post office and school.

Prior to the Civil War, the Sills family was a wealthy, slave holding family. An inventory of property dated 1833 indicated that David Sills, Jr. owned 133 slaves. There are also bills of sale for slaves (1792), references to the death of slaves (1852), and a list of slaves emancipated by the Federal government in 1865.

Ante-bellum correspondence covers a wide range of topics, much of it related to activities of the Sills, Jelks, and Boddie families. Letters (1818-1866) from Tennessee, Alabama and Mississippi comment on life and activities in these states, particularly in reference to crops, prices, smallpox, and emigration of families from North Carolina into these

and other western states.

Throughout the collection there are numerous references to schools and educational developments. The school at Belford, which was intended to educate the family and neighboring children, is mentioned and tuition at this school is recorded (1850, 1868). Other letters are written from schools in Warrenton (1822), **La Grange Female Academy** (1852), **Warrenton Female Seminary** (1857), and at Louisburg and Greensboro. Also included are announcements (1852) on **Franklin Institute** (Franklin County) and **Castalia Female Institute** (Nash County) and a cipher book containing mathematical problems. Letters, diary entries and advertisement reflect the operation of these schools and tell of life while attending them. Also of interest are letters from two of the Sills boys who attended medical schools in Philadelphia and Baltimore. A letter (1857) comments on life at the **University of Pennsylvania**, Christmas day spent at school, and experiences while walking around Philadelphia.

Other correspondence comments on a Democratic Party rally at Franklinton (1852), baseball as a sport (1866), church meetings (1868), and life in Key West, Florida (1833).

A diary (1858-1866) reflects the hardships and emotions felt by the Sills family during the Civil War era. The writer expresses strong anti-Union sentiment prior to secession and reflects the view of women left at home, illnesses of soldiers, and thoughts of the war. Passing references are made to the battles at Roanoke Island and Fort Donelson, the repulse of Union troops by Hoke's Division near Wilmington, the Confederate invasion of the North and the battle of Gettysburg, Confederate hospitals in N.C., and service by Nash County troops.

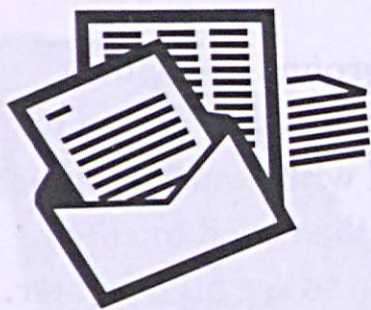
Other material pertains to a distant relative of the Sills through the **Boddie family** who was involved in the **Cuban Civil War of the 1890's**. **Ramon Alpuente**, a Spaniard living in Cuba, had been married to **Mary Boddie**, but she had died. A daughter was sent to live in Spain while Ramon became involved with the Cuban Un-

derground Movement. Outlawed, he fled to England with a small fortune, and then tried to enter Spain to see his daughter. He was captured, tried, and imprisoned by the military and eventually died of maltreatment. Letters to **N.W. Boddie** tell of his exploits and seek Boddie's aid in looking after the daughter.

The bulk of the collection is family oriented, with considerable genealogical material on the **Sills, Arrington, Battle, Jelks, Nicholson**, and **Dameron** families. Of significance are the investigations conducted by **Louise Jelks Sills** into her family's past. There are letters from the DAR and other sources which provide genealogical information.

Article submitted by  
TRCGS Member Freda  
Roberts





## WARREN COUNTY CIVIL WAR LETTER

April 30, 1861

... Think not because I have not written to you all before now or because I have been so negligent that I have forgotten you all not so not a day passes away in this confused Camp but what I think of you all. ...

We are all situationed upon a butiful hill as nice a place as you ever saw and Blessed with as good water as yours and I think better nice springs and any quanty of them This is a Welthy country and a great place for accommodation The People are generally welthy and the grate portion of them Seem willing to accommodate us as far as they are able they frequently Send us Vegetables fruit and furnish us with any quantity of nice wheat Straw to lay on. ...

Nuse came here to say that our Southern Shores is likely to be invaded, or rather the estern ones and Capt. Ruffin Says he is going to try and carry his Company there in a few days if Col. Ransom will consent. ...

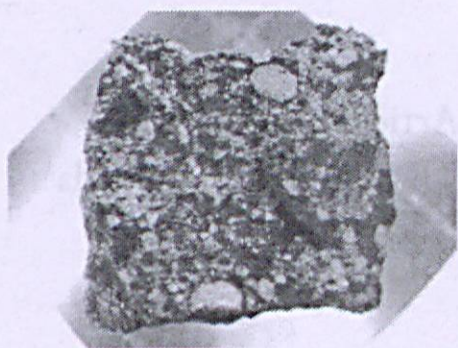
Our boys is enjoying themselves tolerable well until today Col. Ransom said yesterday that no more furloughs would be granted from the camp upon no excuse whatever until just before we Start for Battle And this I think has dissatisfied many So you may not look fore me tell you all sea me for I cannot tell when I can sea you all again.

Very frequently ladys come here from different parts of the State to sea us and to here the butiful Music in our Camp The most butiful Sigt I ever Saw is

here to Sea the many Glittering lights under our white tents at night and to here the Sounds of our Bugles rising among the trees in the Silent woods around.

There is know Nine Hundred or a thousand men in camp and one Regiment is completed asto the number But they are not all equipt My lesure moments are nearly expired and I must close. ...

This letter was written by Private **W. P. McCullen**, Warren Co., the First NC Cavalry, to Miss **Bettie A. Kornegay** of Wayne Co. It was written at Camp Beauregard. The original is in the Southern Historical Collection, UNC and it was published in *The County of Warren*, by Manly Wade Wellman, 1959. Story was submitted by TRCGS Member Peggy Strickland



Picture of 1874 Castalia meteorite taken from New England Meteoritical Services where two are presently for sale.  
[www.meteorlab.com](http://www.meteorlab.com)

## NASH METEORITE

A shower of meteorites fell May 14, 1874, about 2:30 P. M., near Castalia. The fall was accompanied by successive explosions and rumbling noises, lasting about four minutes. The stones that fell must have exceeded a dozen or more—four were found and they gave evidence that the territory over which the fragments fell was ten

miles long by over three miles wide. Although occurring in the day, the body appeared luminous to some observers. One fragment of 12 pounds, one of 7, and two smaller, of between one and two pounds. One sample was immediately dug out, where it was found to be very hot.

The exterior, a thin

black coating, was dull. The interior in many parts is of a dark gray color, and in other parts quite light. The principal cause of the dark color is, doubtless, the larger amount of nickeliferous iron in that part.

Sources: *Journal of the Elisha Mitchell Scientific Society*, Volumes 6-7, *The New York Times*, Nov 24, 1889



## FAMILY IS DEVASTATED

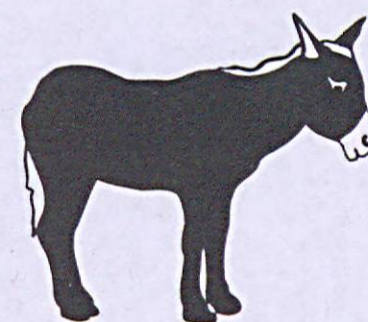
On Thursday night, February 8, while the wind and snow were raging a mule and horse belonging to **Commodore Rackley** and family wandered away from home, trying to get to their former stable in Wilson. One of them the little

mule, Henry, met his death on the Wilson highway by a hit and run driver.

After the mule died the horse, Johnnie, showed his affection by continually walking around the lifeless body.

**Mr. Rose**, a nearby farmer, offered his kindness by furnishing a shelter for the living steed until Friday morning when the owners reclaimed him.

Source: Rocky Mount Telegram, February 1934.



## NEWSPAPER DEATH NOTICES

**James E. Allen**, son of **John H. Allen** of Tarboro, died July 26, 1862 Gravel Hill, Virginia, a member of Capt Foxhall's Confederate Guards, had been wounded by a shell July 2, 1862. Southerner Aug 9, 1862.

Mrs. **Martha S. Arrington**, wife of the late **Dr. John Arrington** of Nash County, died January 30, 1848 Warrenton in her forty third year. Tarboro Press Feb 19, 1848.

Mrs. **Joseph Barrett** died January 18, 1861 near

Tarboro, aged about ninety years, a Revolutionary War Pensioner. Southerner January 19, 1861.

**Dr. Benjamin B. Hunter** died March 1827 Nashville, Nash County. Raleigh Register March 30, 1827.

**Hannah B. Selby**, daughter of **Benjamin M. Selby**, date Sept 1, 1862 Rocky Mount, aged fifteen years and nine months, formerly from Washington. Southerner Sept 6, 1862.

**Lucy Murray Terrell**

[Ferrell?], daughter of **Robert G. and M. B. Terrell**, died July 7, 1846 Stanhope, was born June 30, 1845. Tarboro Press July 22, 1846.

Miss **Ruth A. T. Whitfield** of Nashville died Sept 1840 Gainesville, Alabama. Raleigh Register Sept 23, 1840.

**Robert H. Trevethan** died Oct 13, 1975 Nash County. Daily Sentinel Oct 23, 1875.

MRS. ROSA  
TOMPKINS DIED  
MAY 23, 1849 "AT  
AN ADVANCED AGE",  
NASH COUNTY, AT  
THE RESIDENCE OF  
HER DECEASED  
BROTHER BENNETT  
BUNN. TARBORO  
PRESS MAY 26,  
1849.

## NORTH CAROLINA BASTARDY BONDS

The "Bastardy Bonds" of North Carolina contains bonds posted because of the birth or impending birth of a bastard child. These bonds were intended to protect the county or parish from the expense of raising the child. When the pregnancy of a woman or birth of a child was brought

to the attention of the court, a warrant was issued and the woman brought into Court. She was examined under oath and asked to declare the name of the child's father. The 'reputed' father was then served a warrant and required to post bond. If the woman refused to name

the father, she, her father, or some other interested party would post the bond. In some cases, the mother and reputed father together posted the bond. If the woman refused to post bond or declare the father, she was often sent to jail.

Submitted by TRCGS Member  
Patricia Leonard.



## NAME INDEX

Name.....Page	Name.....Page	Name.....Page	Name.....Page	Name.....Page
Abington, Penelope.....2	Carter, Aaron (Amos) Ebra.....3	Gorham, Mary E.....11	Moore, Winifred M. (Green) 13	Stallings, Norman.....1
Adams, Eugene.....12	Carter, Sarah Elver Liles.....3	Gorham, Mehitable.....11	Naomi, Alice Ethel	Stallings, Paul.....1
Allen, James E.....19	Chapman, Helen B. Gray.....13	Gowan, George.....13	(Crumpler).....13	Stallings, Sol.....9
Allen, John H.....19	Conyers, Margaret A.....13	Gradison (slave).....9	Newby, Mary (Shearin).....15	Stallings, William A.....10
Alpuente, Mary Boddie.....17	Crossan, Thomas M.....7	Gravelly, Louise.....13	Newby, Thomas.....14	Stone, Sarah A. Short.....15
Alpuente, Ramon.....17	Crumpler, Alice Ethel Naomi 13	Gravelly, Roderick Ney.....13	Nicholson Family.....17	Stringe, Anzey Laney
Andrews, Unity Pam.(Hart) 14	Dameron Family.....17	Gray, Helen B. (Chapman)....13	Nobles, Julia Cherry.....14	(Braswell).....12
Armstrong, Martha Ann.....12	Daniel, Charley Jackson.....13	Gray, Mary E.....13	Odom, Baby.....14	Taylor, Florida Ann (Avera) ..12
Armstrong, Walter C.....12	Daughtridge, Annie Louise....13	Green, William Enos.....13	O'Neal, Lorena (Williams)....15	Taylor, Joseph K.....15
Arrington (Baby).....12	Daughtridge, Eddie T.....13	Green, Winifred M. Moore...13	Parker, W. W.....14	Taylor, Louie Albert.....15
Arrington Family.....17	Daughtridge, Helen D (Hart) 14	Griffin, T. H.....13	Perdue, Elizabeth (Stallings) ....1	Taylor, Louisa Heath.....15
Arrington, John.....19	Daughtridge, Jessie Jennings .13	Griffin, W. H.....2	Pettaway, Micajah.....14	Terrell, Lucy Murray.....19
Arrington, Josephine.....12	Daughtridge, Lizzie.....13	Gupton, Annie Laurie.....13	Phillipson, Frank.....8	Terrell, M. B.....19
Arrington, Martha S.....19	Daughtridge, Mary Lena.....13	Guthrie, Annie.....13	Pierce, James H.....14	Terrell, Robert G.....19
Avent, J.B.....8	Daughtridge, William Edy ...13	Guthrie, Lizzie.....13	Pope, Mary E. (Mason).....11	Thomas, A.C.....11
Avent, J.B., Jr.....8	Daughtridge, Wm Mitchell ..13	Guthrie, Mary Thorne.....13	Porter, Lucy Grey (Gatlin)....13	Thorpe, Franklin J.....15
Avent, J.F.....8	Daughtridge, Z.....13	Hales, Leah.....14	Powell, Willie.....14	Tillery, Albert R.....15
Avent, Lillian Bell.....8	Daughtry, Pricilla.....13	Hammond, Gray Willis.....14	Proctor, Bessie May.....14	Tillery, Maggie Chapman
Avent, Mattie.....8	Daughtry, Reddin.....13	Hammond, Louisa J. White...14	Rackley, Commodore.....19	(Vaughn).....15
Avent, Mercer Wilson.....8	Daughtry, Sallie Mercer.....13	Hardison, William J.....14	Ramsey, Joseph.....14	Tillery, Richard C.....15
Avent, T.A.....8	Davenport, David Frederick .13	Harris, A. S.....1	Ramsey, Margaret Bush.....14	Tillery, Richard E.....15
Avera, Florida Ann Taylor ....12	Davenport, Maggie.....13	Harris, Mary (Stallings).....1	Randolph, Lillian.....14	Tompkins, Rosa.....19
Avera, H.D.....12	Davis, Peter.....9	Hart, Helen D Daughtridge ...14	Ransom (Col.).....18	Trevathan, Alpheus Gornell ..15
Aycock, Walter Henry.....12	Dickens, Almata.....13	Hart, Marion Weddell.....14	Reynolds, Olin.....14	Trevathan, Fleda Agnes.....15
Barrett, Joseph.....19	Dillard, William Warren.....13	Hart, Spencer Lee.....14	Rhodes, Larry.....3	Trevathan, Janie E.....15
Basett, Chloe Miller.....12	Dixon, David William.....13	Hart, Unity Pamela Andrews 14	Richardson, Harry S.....14	Trevathan, Nina Elizabeth ....15
Basett, William Amos.....12	Dixon, George R.....13	Hart, W. L.....14	Rideout, John W.....14	Trevethan, Robert H.....19
Bassett Charles Thompson ....12	Dowdell, Susan Lewis.....10	Hartge, Ruby.....14	Ritter, Lillie Bell.....14	Turner, Aletha.....15
Bassett, John Thompson.....12	Downing, Cara Fountain.....13	Haynes, Alfred (Smith).....15	Ritter, Mattie B.....14	Underwood, Jno. R.....2
Bassett, Mollie.....12	Drake, Carolina Elizabeth ....10	Heath, Louisa (Taylor).....15	Rittter, Thelma Arvin.....14	Van Nortwick, Francis L.....15
Bassett, Sarah Davis.....12	Drake, James.....10	Hendren, Irene M (Fountain).13	Roberts, Eli.....14	Vaughn, Maggie Chapman
Bassett, Thomas Clifford.....12	Drake, John Hodges.....10	Henry, Jim Gray.....8	Roberts, James L.....14	Tillery.....15
Bastardy Bonds.....19	Drake, Polly Susan Williams .10	Hester, Robert.....14	Robinson, Clyde.....15	Vause, Clarence Halbert.....15
Batchelor, Mary Lillie.....12	Duncan, Martha A.....13	Hickman, Mary (Bunn).....12	Rose, Anna W.....15	Viverette, Andrew Jackson.....5
Battle Family.....17	Eure, Martha "Pattie" (Liles)...3	Hilliard, Baby Boy.....14	Rose, James H.....15	Viverette, Dock.....5
Battle, Francis (White).....15	Farmer, Mable.....13	Hilliard, Joseph Albert.....14	Rose, William H.....15	Viverette, Elizabeth (Williams) 5
Battle, George Cullens.....12	Finch, Allen.....16	Holden, L. J.....14	Routh, Margaret (Bulluck) ....12	Viverette, Jackson.....5
Battle, James P.....12	Finch, Archie.....16	Horne, John Mercer.....14	Ruffin (Capt.).....18	Viverette, James.....5
Battle, Joseph S.....12	Finch, Asbury B.....16	Huffines, William Whitehead 14	Sadler, Edwin Bryan.....15	Viverette, Rhoda.....5
Battle, Queen A.....12	Finch, Berry.....16	Hunter, Benjamin B.....19	Sadler, Margaret S.....15	Viverette, Thomas.....5
Bell, Floyd A.....8	Finch, James.....16	Hunter, John H.....14	Samford, Caroline Elizabeth	Watson, James W.....15
Bell, Lillian (Avent).....8	Finch, John A.....16	Jackson, William Herbert ....14	Drake.....10	Weeks, Mary Bell.....11
Bernard, Meadie (Williford)..15	Finch, Joseph H.....16	James, Willie H.....14	Samford, Susan Lewis	Weeks, William Silas.....11
Billups, Dempsey F.....12	Finch, Nancy Carpenter.....16	Jelks Family.....17	Dowdell.....10	Wells, Bettie E.....11
Boddie family.....17	Finch, Nancy Jane.....16	Jelks, Louise (Sills).....17	Samford, William Flewellyn ..10	Wells, Lucy Lewis.....11
Boddie, Mary (Alpuente).....17	Finch, Polly Ann.....16	Jenkins, Etta (Gorham).....13	Samford, William James.....10	Wells, Theophilus Bryan.....11
Boddie, N. W.....17	Finch, Rhoda Williams.....16	Jenkins, Mattie L.....14	Selby, Benjamin M.....19	White, Francis Battle.....15
Bone, Alice.....12	Finch, Rosetta.....16	Jones, John.....14	Selby, Hannah B.....19	White, John.....7
Braswell, Anzey Laney Stringe 12	Finch, Stella.....16	Jones, Mary A.....14	Shearin, Mary Newby.....15	White, Louisa J. (Hammond) 14
Braswell, Eulah.....12	Finch, William H.....16	Jones, Priscilla Della (White)...7	Shine, Frances E.....15	White, Priscilla Della Jones....7
Braswell, Jacob Ealy.....12	Fletcher, Exum.....13	Jordon, Reverdy.....14	Shine, Winnifred F.....15	Whitehead, Bettie C.....15
Braswell, Joseph M.....12	Forbis, Arthur.....10	Kersey, Mary F.....14	Short, Alma A.....15	Whitehead, William H.....15
Braswell, Matthe S.....12	Fort, Jacob G.....13	Kimball.....9	Short, Florence G.....15	Whitfield, Ruth A.T.....19
Braswell, Nanie Corenlia.....12	Fountain, Cara.....2	Kornegay, Bettie A.....18	Short, John R.....15	Williams, Andrew Jackson.....5
Braswell, Robert R.....12	Fountain, Cara (Downing) ....13	Lanier, Martha J. Yarborough 14	Short, Sarah A. (Stone).....15	Williams, Cooper.....11
Braswell, Thomas P.....12	Fountain, Helen Elizabeth ....13	Lewis, Norman.....1	Short, Virginia (Burnette) ....12	Williams, Elizabeth.....15
Britt, Henry.....12	Fountain, Irene M Hendren...13	Lewis, Siddle.....10	Sills Family.....16	Williams, Elizabeth Viverette ..5
Britt, Tempie A.....12	Fountain, Mary.....13	Liles, Martha "Pattie" Eure ....3	Sills, David Jr.....17	Williams, James W.....11
Bulluck (Baby).....12	Fountain, Spencer.....13	Liles, Sarah Elver.....3	Sills, Louise Jelks.....17	Williams, John.....10
Bulluck, David William.....12	Fountain, William Edward ...13	Liles, William.....3	Skinner, Baby Boy.....15	Williams, Lorena O'Neal.....15
Bulluck, Margaret Routh.....12	Freeman, Mary Eliza.....13	Long, J. H.....14	Skinner, Robert E.....15	Williams, Micajah Tood.....5
Bulluck, Maurice.....12	Garratt, Joseph J.....13	Long, William Dorsey.....14	Smith, Alfred Haynes.....15	Williams, Polly Richard
Bulluck, Rosa A.....12	Garvey, A. J.....13	Mann, Loula Eva.....14	Smith, Andrew.....15	Susan (Drake).....10
Bunn, Bennett.....19	Garvey, Bertha Matilda.....13	Mason, Mary E. Pope.....11	Snyder, Rita.....15	Williams, Rhoda (Finch).....16
Bunn, Elias.....12	Garvey, Gertrude.....13	Matthews, Perry L.....14	Soden, Caleb.....15	Williford, John F.....15
Bunn, Elizabeth Drucilla.....12	Garvey, J. Thad.....2	Mayo, Mary Elizabeth.....14	Soden, Robert.....15	Williford, Meadie Bernard ....15
Bunn, Mary Hickman.....12	Garvey, James T.....13	McCullen, W.P.....18	Sorsby, Mary.....15	Wimberley, Mary.....15
Bunn, Redmun.....12	Garvey, Margaret.....13	Mercer, Sallie (Daughtry) ....13	Stalling, Mary.....10	Winstead, William Robert ...15
Bunn, Sarah Rosa.....12	Gatlin, Lucy Grey Porter.....13	Miller, Chloe (Basett).....12	Stallings, Carrie M. (Moore)..10	Woodard, Helen Gray.....15
Bunn, William Henry.....12	Gay, James Ellen.....13	Moore, Carrie M. Stallings....10	Stallings, Elizabeth Perdue ....1	Woodard, Virginia C.....15
Burnette, Virginia Short.....12	Gay, John.....13	Moore, Edward C.....14	Stallings, Herbert.....1	Yarborough, Martha J.
Burrows, Margaret M.....12	Gay, Lottie May.....13	Moore, Ella Jane.....11	Stallings, James.....1	(Lanier).....14
Burrows, Stephen.....12	Gay, Martha.....13	Moore, Jefferson.....10	Stallings, John N.....10	
Bush, Margaret (Ramsey).....14	Gibbs, Theresa.....13	Moore, Linda Sawyer.....11	Stallings, Joseph S.....10	
Calhoun, William J.....12	Gordon, Edward Stuart.....13	Moore, Mary L.....14	Stallings, Lillie.....1	
Carpenter, Nancy (Finch).....16	Gorham, Etta Jenkins.....13	Moore, Walter S.....14	Stallings, Mary Harris.....1	