

An aerial photograph of High Point, North Carolina, showing a dense urban area with numerous buildings, streets, and a prominent railway line running diagonally through the center. The image is in black and white, with a high-contrast, slightly grainy texture.

Welcome to

HIGH POINT

NORTH CAROLINA

Where Living is Pleasant

Statistical Review

Form of Government — Council-Manager since 1915.

Population — 1960 Census (U. S.) for city proper 62,063 with American-Born 99.5%. Predominating nationality of foreign-born residents, Greek .5% Total Negro population 18+%.

Area — 30.80 square miles.

Altitude — 940 feet above sea level.

Climate — Mean annual temperature, 58 degrees F; average rainfall, 47.17.

Assessed Property Valuation for 1969 — \$372,051,548 with \$1.19 per \$100 city tax rate; school supplement \$.40 city, \$.84 county tax rate; percent of valuation for tax purposes 70% of sound value.

Bonded Debt — \$30,375,000.00.

Financial Data — Six banks with total deposits of over \$144 million and total resources well over \$150 million; 3 savings and loan associations with total assets of \$66,686,324.

Postal Receipts — \$2,126,003.04 (December 31, 1969).

Telephone — See "Utilities" — Page 7.

Value Building Permits — For 1969 — \$28,335,148.00.

Churches —

1. Protestant	149
2. Jewish	1
3. Catholic	2
4. Greek Orthodox	1
5. Seventh Day Adventist	1

Employment —

1. Manufacturing	56,000
2. Government	16,400
3. Commercial & Service	16,000
4. Other	17,000

Trade Area — Area radius of 25 miles, population 625,000; area radius of 50 miles, population 1,500,000; in shopping area of High Point, population 100,000.

Retail Sales Volume based on Sales Tax \$123,885,000.00

News Media —

1. Newspapers	1
a. Total Circulation	34,420
2. Radio Stations	3
3. Television Stations	1

Hotels	2
a. Number of Rooms	237

Motels	6
a. Number of Rooms	421
b. Immediate High Point Area (incl. High Point)	9
with total number of rooms	741

Transportation —

1. Railroads	3
2. Trucking Lines	48
3. Local Bus Companies	2
4. Transit Bus Companies	1
5. Airlines	3

Major Highways — U.S. 29-70, 29A-70A, 311; N.C. 66, 62, 68; Interstate 85.
 Airports — 5 — one commercial and four private for small planes.
 Amusements — Largest auditorium in city (school) seats 1,300 — next largest, 1,000 persons — 3 motion picture theatres and 1 drive-in.
 Golf Courses in Area 4
 Public Libraries . . . One with 1 Branch, 1 Bookmobile; 125,000 Volumes.

GENERAL INFORMATION ABOUT HIGH POINT, NORTH CAROLINA

Police Department —

1. Police Officers	138
2. Meter Checkers	3
3. Clerks	7
4. School Crossing Guards	20
5. Pieces Motor Equipment	53
6. Dispatchers	8
7. A police reserve corps of highly trained volunteers	24
8. Highway Patrol	22

Fire Department —

1. Firemen	130
2. Clerks	1
3. Pieces Motor Equipment	24

Also Fire Prevention Bureau with 3 men; maintenance division with 2 mechanics; communications division with 7 men; a training division with 1 man; a training center with a five-story masonry drill tower; draughting pit; flammable liquids pit and other training facilities; 8 stations; total property valuation of \$1.5 million.

Public Utilities —

1. Residential Water Meters	17,102
2. Residential Electric Meters	18,276
3. Residential Gas Meters	8,267
4. Miles of Water Lines	308
5. Miles of Sewer Mains	333
6. Miles of Gas Mains	142

Capacity of water works (municipal) 12,000,000 gallons; filtered water storage, 13,000,000 gallons; daily average consumption 9,000,000 gallons; capacity of sewage treatment plants, 12,000,000 gallons daily. Value of water-sewer plants, \$6,000,000.00.

Public Works —

1. Total Street Mileage	304.46
a. Miles of Streets Paved	233.48
b. Miles of Streets Unpaved	70.98

Employment Agencies —

1. Private	5
2. State	1

Health and Medical Services —

1. Hospitals	1
a. Beds	367
2. Health Units	2
3. Doctors	92
4. Dentists	27
5. Podiatrists	3

6. Chiropractic Physicians	7
7. Specialists	59
8. Nurses	87
9. Nursing Homes	5

Commercial and Service Facilities —

1. Shopping Centers

a. College Village Shopping Center	
1. Land Area	12.78
2. Square footage under roof	132,908
b. East Green Plaza Shopping Center	
1. Land Area	(sq. ft.) 37,418
2. Square footage under roof	14,265
c. Southgate Shopping Center	
1. Land Area	11.01
2. Square footage under roof	113,640
d. Fairfield Plaza Shopping Center	
1. Land Area	9.84
2. Square footage under roof	77,768
e. Northwood K-Mart Shopping Center	
1. Land Area	12.39
2. Square footage under roof	97,950
f. Westchester Mall Shopping Center	
1. Land Area	29.6
2. Square footage under roof	(under constr.) 350,000
g. West Burton & Westchester Streets Shopping Center	
1. Land Area	25
2. Square footage under roof	(under constr.) Est. 250,000

2. Banks	6
3. Department Stores	15
4. Men's Wear	15
5. Ladies' Wear	16
6. Jewelers	15
7. Grocery Stores	122
8. Major Oil Companies	10
9. Service Stations	124
10. Cleaning Establishments	36
11. Real Estate Companies	27
Attorneys	59
Accountants	16
Architects	12

Training Programs Available Other than through Normal Institutions of Learning —

1. Office of Economic Opportunity	
a. Operation Mainstream	
b. Neighborhood Youth Program	
c. On-The-Job Training	
d. Operation Head Start	
2. U. S. Department of Labor	
a. Apprenticeship Training	
b. Manpower Development Training Act (initiates with Employment Security Commission)	

3. Guilford Technical Institute	
a. Vocational and Technical Training	
4. N. C. Manpower Development Corporation, Manpower Dev. Center	
Per Capita Income (1968 Guilford County)	\$ 2,923.00
Per Family Income (1968 Guilford County)	\$10,109.00
Households	18,000
Average Size Family	3.39
Passenger — Automobiles	37,848
Trucks	7,158
Housing Starts	374
Civic, Professional, Social, Church, Veteran, Fraternal,	
Sororities, Service and Other Like Clubs	121
United Fund Agencies	29
Total Annual Payroll (1968 Guilford County)	\$235,222,300
Finance — (Effective Buying Income) (Guilford County)	\$816,015,000
Retail Sales (1968 Guilford County)	\$925,199,000
Banks	6
Savings and Loan Companies	3
Small Business Administration, Charlotte, N. C.	
N. C. Development Corporation, Raleigh, N. C.	

ORIGIN OF NAME

High Point was originally on the Old Indian Trail extending from the seashore to the mountains which later became the Old Plank Road.

High Point derived its name from a statement made by Captain Gregg, chief engineer of the surveyors of the North Carolina Railroad from Goldsboro to Charlotte (now leased by the Southern Railway) in which he said, "This is the highest point along the whole survey, so we will mark it High Point." High Point is located in the heart of the Piedmont, the broad plateau extending from mountains which rise almost 7,000 feet in the west to coastal plains sloping eastward to the Atlantic. It has an area of 30 square miles and an altitude of 940 feet above sea level.

CLIMATE IS WONDERFUL

High Point climate is wonderful with four beautiful seasons. There are few extremely hot or cold days. The average mean annual temperature is 58 degrees with adequate supply of rainfall annually.

POPULATION GROWTH

Census: 1900 — 4,163; 1910 — 9,525; 1920 — 14,302; 1930 — 36,745; 1940 — 38,495; 1950 — 39,973; 1960 — 62,063.

INDUSTRY

High Point occupies the unique position of being the Southern center of two major industries — furniture and hosiery manufacturing.

The first furniture factory was established in 1888 — today there are some 83 furniture factories located here manufacturing a complete line of wooden and upholstered household furniture, including also office desks and other items.

There are factories which maintain private showrooms, including Kaylyn, Incorporated; Carolina Upholstery Company, Inc.; Heritage Furniture Company; Directional Industries, Inc.; Schoonbeck Company; Tomlinson of High Point; and Thayer-Coggin, Inc. Other showroom buildings are Bassett Enterprises, Inc. and American Square. In addition, there are a number of exhibition buildings which display the products of approximately 600 manufacturers. These are: The Southern Furniture Exposition Building; Furniture Plaza; High Point National Furniture Mart;

Merchandise Mart; Furniture Display Building; Southeastern Building; and the Dealer's Mart. The combined floor space of these buildings is approaching 1½ million square feet. High Point is the focal point of the great Southern Furniture Market, recognized as the only truly national furniture market in the country, and as one of the most significant furniture markets in the world. Styles are shown to the trade at four markets each year — in April and October to a national and international audience and in January and July to a regional audience. Private showrooms and exhibition buildings are open only to members of the trade.

The daily capacity of the 22 hosiery mills of High Point exceeds 80,000 dozen pairs of hose, socks and children's wear. The manufacture of hosiery ranges from infants' hose to ladies' seamless hose. The volume of men's half hose and boys' socks are predominant. This makes High Point the largest producer of hosiery in the world. The first hosiery mill in High Point was established in 1905.

There is a wide diversity of manufacturing in High Point — in addition to 83 furniture factories and 22 hosiery mills, there are many diversified manufacturing plants. Among these are plants manufacturing men's and women's apparel, bus and truck bodies; mattresses; box springs; pillows; veneers; plywoods; fibre glass boats; art glass; paints; enamels; varnishes; lacquers; sealers; stains; fillers; undercoats; reducers; building materials; mirrors; glass furniture; novelties; toys; hosiery transfers; embossers' labels and seals; silk and rayon weaving; hosiery yarns; dyes; chemicals; textile oil specialties; paper boxes; corrugated shipping containers; television cabinets; textile spools; polyurethane foam; electronics; tools and dyes; springs; fabric distributors; belts; asphalt products; bakery and dairy products; batting, bedding, brushes; cement blocks, signs, soaps; solvents; silk screens; feeds, floors, frames, leather products and mill work.

The Manufacturer will find in High Point many advantages so necessary for successful and profitable operation (this is proven by the successful operation of plants now located here). Among these are climate; good living and working conditions; harmonious industrial relations; ample public utilities; adequate electric power; and modern municipal facilities.

High Point is located on the main line of the Southern Railway System between New York and New Orleans, La.

The High Point, Thomasville and Denton Railroad is a successful short line railroad connecting, through the Winston-Salem southbound railroad, with the Norfolk and Western Railway, the Atlantic Coast Line Railroad and the Norfolk and Southern Railroad with through rates and service applying. The C&NW is a division of the Southern to Asheboro and to the South.

Air service through the Greensboro-High Point-Winston-Salem Airport is furnished by Eastern Airlines, United Airlines and Piedmont Airlines.

CHARTER AND FORM OF GOVERNMENT

The original charter of the City of High Point was granted by the State Legislature in 1859.

The present charter provides for a city council consisting of a mayor and eight councilmen, elected by popular vote. Tenure of councilmen, two years.

High Point is operated under the modern city manager form of government which places responsibility for efficient operation of all departments upon which the city manager heads, and delegates to him authority commensurate with such responsibility.

Pursuant to provisions in the State of North Carolina Constitution, no new indebtedness may be created in any fiscal year in excess of 66.67% of the amount of retired indebtedness during the previous year except by vote of the citizens.

UTILITIES

The City operates its own electrical distribution system serving residential, commercial and industrial customers of unlimited size at rates comparable to private power rates of this area. There are 20,177 customers on the system. The system is of the most modern equipment, design and construction with a 69,000 v loop as its backbone. Advance system design, planning and financial programming have been done to insure a system second to none. The substantial profit from the operation of the system is reflected in other services.

Duke Power Company supplies all the electricity in our area, serving the City of High Point as a wholesale supplier and serving many large industrial customers directly. Industrial rates in the City of High Point are among the lowest in the southeast. Present expansion plans for the Duke generating system insure adequate power for all future needs.

Piedmont Natural Gas Company supplies natural gas to the High Point area. Through its distributing system, Piedmont Natural Gas serves residential, commercial, and industrial customers. The gas delivered contains not less than 1,000 BTU's per cubic foot with a specific gravity of .60. Natural gas is available in virtually all the industrial sections of the High Point area.

Telephone services are furnished in High Point and surrounding areas by North State Telephone Company which has pioneered in Telephony since 1905. There are at the present time 61,134 telephones in service — 46,673 in High Point; 11,938 in Thomasville; and 2,523 in Randleman, also 144 PBX Systems; 576 long distance circuits. The company is the fourth largest of 29 independent telephone companies operating in the State and was the first company to install the dial system in North Carolina. The High Point Exchange Area covers over 290 square miles. Extended Area Service between High Point and the Thomasville Exchange is provided.

EDUCATION

High Point College is one of the most dynamic and progressive educational institutions of the South. Its fundamental purpose is to prepare students for the tremendously important leadership roles of the future. In doing this, it stresses active participation and responsibility on the part of the students for their learning experiences.

It is accredited by regional, state, and church agencies and its curriculum provides for A.B.; B.S.; and A.B.T. degrees in 17 major fields. High academic standards are maintained and only those students who show leadership potential and are in the upper half of their high school graduating class are admitted.

In addition to the regular college program, High Point College maintains an evening college for those who work; numerous special conferences; seminars; workshops; and short courses. It was the first college in the South to offer laboratory programs in leadership and continues these programs for students, faculty, church, educational, business and religious groups.

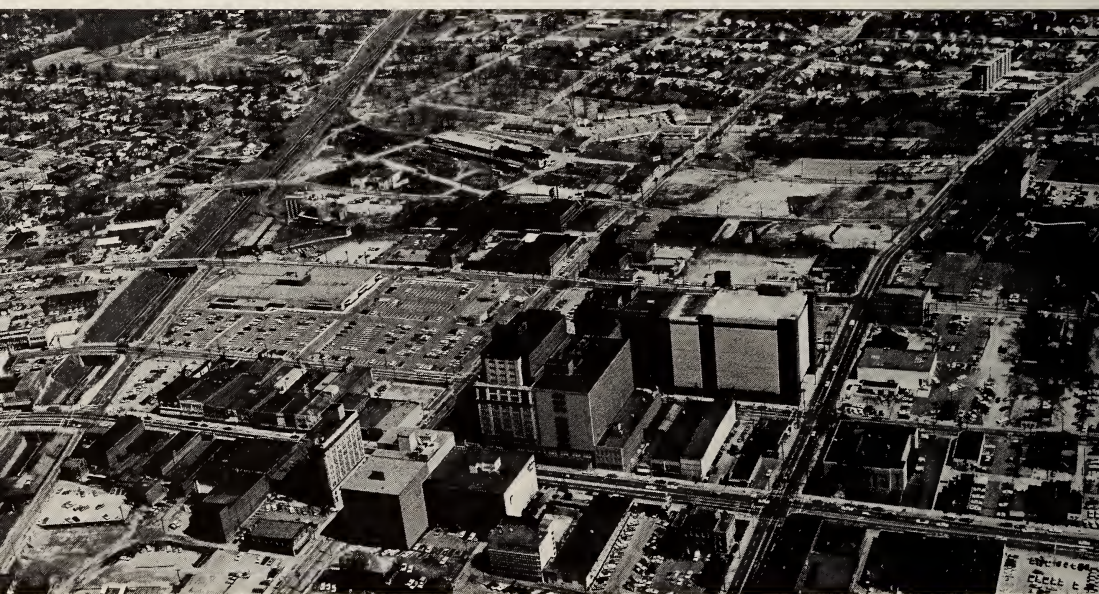
The enrollment of 1,200 for regular season and 600 for summer and night classes represents 21 states and 6 foreign countries. The campus consists of 65 beautifully wooded acres with modern fire-proof buildings. Tuition and costs are maintained at a minimum to assure an education for anyone with the aptitude and the ambition.

Public Schools — High Point City Schools — The city school system with an enrollment of 12,268 and a professional staff of 571 consists of the following:

2 Senior High Schools — Enrollment	2,254
3 Junior High Schools — Enrollment	3,100
14 Elementary Schools — Enrollment	6,879



HIGH POINT COLLEGE
Co-educational—1200 Students—Founded 1924



Showing Furniture Market Complex



HIGH POINT MEMORIAL HOSPITAL OF 357 BEDS
Nurses Home at Left



STREETCAR
Once Made in High Point
Now a Show Piece



ONE OF THE OLDEST HOUSES
IN HIGH POINT
Now Restored as a Historical Place

A NEW MUSEUM IS BEING CONSTRUCTED ON THIS SITE

These schools are housed in buildings valued at \$16,500,000.00. Seven public schools of the Guilford County System are located on the edges of High Point, as well as, four Randolph County Schools and several Davidson County Schools nearby.

The Guilford Technical Institute, a two-year State-County supported institution of higher education and vocational training, is located in Guilford County adjacent to the City of Jamestown. The Trustees of the Institute, through the State Board of Education, award the Associate in Applied Science degree for studies completed satisfactorily in such curriculums as electronics; business administration; secretarial science; machine design; chemistry; furniture technology; dental hygiene; and others. Vocational curriculums include metal and machine trade; welding; drafting; auto mechanics; practical nursing; cosmetology and others. The objective of the Institute is to meet the educational needs of the community and to make useful citizens..Total enrollment is over 2,000. A high school diploma is required of students embarking in a technical program, but a diploma is not required for vocational programs provided that the individual by State law is a mature person 18 years or more of age.

Private schools located in High Point include nurseries; kindergartens; sectarian and parochial schools in grades 1 through 8. Our newest private school is Westchester Academy.

Colleges — High Point College. Accredited colleges located within easy commuting range — Wake Forest College; Winston-Salem College; Salem College; University of North Carolina at Greensboro; Greensboro College; Guilford College; Bennett College; and A & T College.

PUBLIC SCHOOLS

Allen Jay Primary School	111 Elder Road	Johnson Street School	1601 Johnson Street
Allen Jay High School	1201 East Fairfield Road	Kirkman Park	
Andrews, T. Wingate, High School	1920 McGuinn	Elementary School	715 East Farriss Avenue
Archdale School	207 Trindale Road	Leonard Street School	1009 Leonard Street
Brentwood School	600 Brentwood Street	Millis Road School	Jamestown
Cloverdale School	1308 Cloverdale Avenue	Montlieu Avenue School	Montlieu Avenue
Emma Blair School	504 East Russell Avenue	Northeast Junior High School	1710 McGuinn
Fairview Street School	608 Fairview Street	Northwood Elementary	
Ferndale Junior		School	818 West Lexington Avenue
High School	701 Ferndale Boulevard	Oak Hill School	320 Wrightenberry Street
Florence High School	RFD No. 1	Oak View School	614 Oakview Road
Griffin, Alfred J.,		Parkview Village School	Boundary Street
Junior High School	Day Street	Ragsdale, Lucy, High School	Jamestown
High Point		Tomlinson, Charles F., School	Chestnut Drive
Central High School	801 Ferndale Boulevard	Trindale School	Balfour Drive
Jamestown Elementary School	Jamestown	Trinity Elementary School	RFD No. 1, Trinity
Jamestown Junior High School	Jamestown	Trinity High School	Trinity
		Union Hill School	206 Triangle Lake Road

OTHER EDUCATIONAL INSTITUTIONS

Christ The King School	1611 Kivett Drive
Guilford Technical Institute	Jamestown
High Point College	Montlieu Avenue
Immaculate Heart of Mary School	500 Montlieu Avenue
Westchester Academy, Inc.	Pine Tree Lane

PRIVATE BUSINESS SCHOOLS

North State Business College	329 North Main Street
International Computer Services	329 North Main Street

BEAUTY CULTURE SCHOOL

Artist Beauty College	327½ North Main Street
-----------------------	------------------------

GUILFORD COUNTY

Guilford County is named for Frederick (Lord North) Earl of Guilford. Area 691 square miles. Formed in 1771 from Orange and Rowan Counties. Population, 246,520 (1960 Census). Estimated 1969 population, 301,000. Guilford County Tax rate .84 plus .30 school supplement. Assessed property valuation for Guilford County for 1968-1969 \$1,582,381,584.

AGRICULTURE

Farming in Guilford County is progressive and prosperous. Climate and soil conditions are favorable and markets are numerous and accessible. Major farm products produced in the County include tobacco, corn, hay, wheat, and soybeans. Dairy farming, beef production, poultry and egg production and feeder pigs are fast becoming major sources of income. The value of agricultural products produced in 1969 was over \$21 million. We have one major packing plant processing cattle and hogs. Many of our farmers produce strawberries and vegetable crops for our urban friends on a "pick-it-yourself" basis.

High Point supports 4-H; FFA programs for our youth. Farm Bureau and Grange organizations are active throughout our county.

RECREATION AREA

First City Lake Park — 969.36 acres. Swimming pool 270 feet long, 165 feet wide, ranging in depth from $2\frac{1}{2}$ to 11 feet; ample for Olympic swimming trials; water tested continuously as to purification; large wading pool; free swimming classes. Capacity of pool is 1,250,000 gallons of water. Concrete dam and walkway over watershed. Modern, spacious gym; pavilion; softball field; outdoor amphitheatre; children's playgrounds equipped with the most modern equipment; family picnic facilities; six weeks summer day camp operated for retarded children. Miniature train and large liner to take passengers on tour of High Point watershed. There are 341.0 acres covered by water and 628.36 acres of field and forest at City Lake. Fishing from boat or bank on daily basis year round.

Washington Terrace — 27 acres; swimming pool; wading pool; 2 lighted tennis courts; paved multi-use areas; picnic grounds; picnic shelters; paved parking areas behind recreation center; softball field; lighted athletic and baseball field; playground for children; modern recreation center; miniature train and airplane amusement ride.

Blair Park — 152.9 acres. Golf course; 18 hole championship golf course; club house; pro shop and maintenance shed area; 5 A.A.U. regulation lighted horseshoe pits; 4 paved and lighted tennis courts; and modern administration offices.

Total over 1,500 acres park and recreation lands including approximately 58 park strips and garden plots throughout the City of High Point ranging from 50' x 50' to $2\frac{1}{2}$ acres in size. 18 lighted ballfields; 28 lighted tennis courts; and 21 neighborhood parks help to serve the needs for comprehensive program of wholesome recreation for men, women and children.

Active cultural arts program which includes men's and women's chorus; community orchestra; community band; and community theatre. Also, Saturday morning children's cultural programs presented monthly in cooperation with the Arts Council.

Unique High Point Youth Council, with representatives elected from 4 area high schools, provides exceptional opportunities for leadership, service and recreation for teen-age groups. This Youth Council sponsors and conducts such programs and projects as Youth of the Month; Youth Government Day; Youth Week; School



CITY LAKE

Built in The Twenties—Stores 1¼ Billion Gallons Of Water

Beautification Contest; Youth Talent Show; Battle of the Bands; Teen Dances; and other various volunteer service projects.

Active arts and crafts workshop and ceramics center.

20 playgrounds scattered throughout the City staffed during the summer. 6 neighborhood recreation centers, with trained personnel at each center to operate a program of recreation for all ages. Also, a \$150,000.00 recreation center for Senior Citizens with a complete and diversified program of recreation activities and other social services for the elderly.

Numerous other special facilities and activities under the supervision of the Parks and Recreation Department, including a secondary watershed with an 800-acre lake currently under construction. When completed in 1970, this area will include a total of 1,550 acres with an 18-hole championship golf course; tennis center with 12 Grasstex courts; a family campground; family picnic areas; a boating marina and boat docks. Activities on the lake include boating; fishing; water skiing; sailboating and duck hunting.

The High Point YMCA, YWCA and Salvation Army Boys Club also have active intensive programs based upon the services traditionally presented by these agencies.

HIGH POINT PARKS AND RECREATION

Parks and Recreation Administration Building, 221 Nathan Hunt Drive

The Parks and Recreation Department is operated by the City of High Point through the general budget with funds derived from sources other than taxes.

A year-round recreation program is conducted for all age groups from pre-school through Golden Agers. Activities include organized athletics, arts and crafts, dances,

parties, music and drama, table games, nature and camping, hobby interests, and special events such as doll shows, kite contests, and holiday celebrations.

City Lake Park

970 acres including swimming pool, 10 picnic shelters, fishing area, boat dock, playground equipment, miniature train, and excursion boat ride.

Washington Terrace Park

27 acres on East Washington Drive including swimming pool, recreation center, miniature train, whirling swing ride, 5 picnic shelters, and children's playground equipment.

Blair Park

Eighteen-hole championship golf course, 4 lighted tennis courts, and 12 lighted horseshoe courts.

Allen Jay Park

23 acres on Elder Road with 3 lighted ball fields, 2 picnic shelters, 4 lighted tennis courts, and playground equipment.

Armstrong Park

5.3 acres on East Parkway and Brookside Drive with lighted little league field, 2 picnic shelters, 2 lighted tennis courts, and children's playground equipment.

Brentwood Park

3.9 acres on Brentwood Avenue with 2 lighted softball fields, 1 lighted little league field, and children's playground equipment.

Cedrow Park

10.7 acres on Cedrow Avenue with 2 lighted ball fields, 2 lighted tennis courts, 2 picnic shelters, and children's playground equipment.

Council Street Park

5.2 acres on Council Street with 1 concrete basketball court, 2 lighted tennis courts, 1 picnic shelter, and children's playground equipment.

Eastwood Park

3.4 acres on Whitman Place with neighborhood ball field, 1 tennis court/basketball court, 1 picnic shelter, and children's playground equipment.

Five Points Park

2.0 acres on Gordon Street with 2 lighted tennis courts and children's playground area.



NEW CITY LAKE
Started in 1969—Will Store 3 Billion Gallons Of Water

Goldston Park

2.7 acres on South Elm at Cassell Street with recreation center, lighted baseball field, concrete basketball court, and children's playground equipment.

Harvell Park

21.0 acres on Lincoln Drive with 3 lighted ball fields, concrete basketball court, and children's playground equipment.

Hedgecock Park

7.3 acres on June Place at Parris Street with 1 lighted little league field, 2 lighted tennis courts, 1 picnic shelter, and children's playground equipment.

Hillside Park

2.2 acres on Vail Street with recreation center, neighborhood ball field, concrete basketball court, and children's playground equipment.

Mohawk Park

1.8 acres on Pinehurst at Parkwood Street with 2 lighted tennis courts and children's playground area.

McCain Park

5.4 acres on East Lexington at Fifth Street with 2 lighted tennis courts and children's playground equipment.

Newlin Street Park

2.9 acres on Asheboro at Newlin Street with 1 neighborhood ball field with children's playground equipment.

Oakview Park

11.7 acres on James Road with 2 lighted ball fields, 2 lighted tennis courts, 1 picnic shelter and children's playground equipment.

Parkside Park

2.4 acres on Blain at Parkside with neighborhood ball field, 1 tennis court, 1 picnic shelter, and children's playground equipment.

Astor Dowdy Senior Citizens Center

Located on East Green at Park Street — Complete recreation center for senior citizens with music, ceramics, movies, social activities, library services, and a full range of activities designed for the retired citizen.

Tot Lots

Six tot lots currently operate throughout the City with several more in the process of being developed.

Park Strips

Over 40 circles and medians are maintained and beautified on a periodic basis.

Emerywood Country Club, Emerywood Drive

Tennis courts; swimming pool and nine-hole golf course.

Sedgefield Hotel and Club

Eighteen-hole golf course and tennis courts.

POINTS OF INTEREST IN HIGH POINT AND NEARBY TERRITORY

AIRPORT — Municipal serving Greensboro, High Point and Winston-Salem with total flights in 45 and total flights out 45 daily. Total landings and take-offs of every kind in 1968 was 141,865; total air carriers landings and take-offs for 1968, 34,801.

GUILFORD COURTHOUSE NATIONAL MILITARY PARK — Revolutionary Battle site.

FAMOUS TREE, CORNWALLIS OAK — Located on the battleground.

GENERAL GRIMES MONUMENT — Located on the battleground.

MUSEUM — Located in Springfield Meeting House. City museum developing.

SEDFIELD COUNTRY CLUB — Located within 15 minutes drive by automobile.

Mild weather and ideal terrain makes Guilford County a paradise for those who like golf, hunting, riding and other outdoor sports. Golf is a twelve-month's sport and Guilford courses are as popular with beginners as with leading professionals of the country.

DIVERSIFIED SPORTS — Guilford County visitors may enjoy a complete program that includes football, baseball, softball, basketball, tennis and skeet-shooting. Nearly all sports have their devotees in this great Southern climate.

AUTO TRAVEL — Time to Pinehurst, 2 hours; Roaring Gap, 2 hours; Winston-Salem, 40 minutes; Greensboro, 30 minutes.

ASHEVILLE AND THE GREAT SMOKY MOUNTAINS NATIONAL PARK are within a few hours drive to the West and to the East are the sounds and beaches of Eastern North Carolina.

TOMLINSON OF HIGH POINT SHOWROOMS — Open daily to the public except during the months of January, April, July and October, which are the months in which the Southern Furniture Markets are held.

THE GIANT BUREAU — (open 8-12; 1-5 weekdays) 508 North Hamilton Street, symbolizing the city's position as a furniture manufacturing center; was formerly the office of the High Point Chamber of Commerce. It was built in 1925 at the corner of North Main and Church Streets. It was built of wood painted white, is 32 feet high, 27 feet long and 14 feet wide. A square screen on the top represents a mirror. The front of the building is designed to simulate a bureau with drawers and knobs. The building was moved to its present location and presented to the Junior Chamber of Commerce in 1951.

THE JOHN HALEY HOUSE — Located at 1805 East Lexington Avenue at the site of the future High Point Museum Historic Park. This building of handmade brick was erected in 1786 by John Haley of Quaker heritage. It was built similar to other Quaker buildings in the area, although it has some German influence. On the map of North Carolina and South Carolina in 1823 it is shown as the only stopping place in this area, since High Point was not chartered until 1859. Haley was a blacksmith by trade, prominent in the area and overseer of the Martinville (Guilford Courthouse) to Salisbury Road (now Lexington Avenue) and it was natural that his home become a regular stopping place for wagons or stagecoach travelers where they would partake of food and lodging while waiting for repairs to horseshoes or wagons. In 1838 Jonathan Welch purchased it and continued to run it as an Inn or Tavern.

The house still bears the marks of its stagecoach days. The bricks in the northwest corner are worn round where they were nicked by the hub of the coach as its prancing horses were brought to a stop at the door of the house. Purchased in 1966 by the City of High Point for restoration and controlled by the High Point Historical Society, Inc.

The High Point Museum is located in the Little Red Schoolhouse at the corner of East Ray and North Hamilton Streets. A trolley used in New Orleans from 1922 until 1963 has been returned to High Point, where it was built in 1922 by the P. A. Thomas Car Works, and is on the grounds of the museum. The museum houses a Diorama of early High Point, 1900 store, early Fire Department, and many other historical collections and exhibits. Open on Sundays 2-4 P.M. (Groups by special appointment.)

NORTH CAROLINA

North Carolina was settled in 1650. North Carolina entered the Union November 21, 1789. North Carolina has 52,712 square miles of which 3,570 are water. North Carolina is 520 miles long and 200 miles wide. The State Flower is the Dogwood and the State Bird is the Cardinal. North Carolina is comprised of 100 counties. The topography consists of three distinct types — the coastal plain; the central Piedmont area which attains an elevation of about 1,000 feet and the Appalachian Mountains. Mount Mitchell (6,684 feet) is the tallest peak east of the Mississippi River.

Roanoke Island is historically important as the site of the first English Colony (The Lost Colony) in America in 1587. Virginia Dare was born there (August 18, 1587), the first white child of English parentage born in the new world. In Charlotte was signed the first American declaration of independence (May 20, 1775), known as the Mecklenberg Declaration.

North Carolina Motto: *Esse Quam Videri* — (To be; rather than to seem.)



GREENSBORO—HIGH POINT—WINSTON-SALEM AIRPORT
 Four Major Airlines—More than 75 Flights Daily

MILEAGE FROM HIGH POINT TO CITIES WITHIN NORTH CAROLINA

Ahoskie	199	Englehard	274	Maggie Valley	194	Smithfield	117
Albemarle	48	Fayetteville	100	Manteo	277	Southern Pines	75
Andrews	266	Fontana	270	Minnesott Beach	244	Southport	207
Asheboro	24	Fort Bragg	90	Mocksville	40	Sparta	89
Asheville	165	Franklin	246	Monroe	87	Statesville	63
Badin	49	Fuquay-Varina	82	Morehead City	234	Stoneville	38
Banner Elk	126	Gastonia	97	Morganton	117	Surf City	222
Beach Mountain	126	Goldsboro	139	Mount Airy	54	Tabor City	175
Benson	108	Greensboro	17	Mount Gilead	62	Thomasville	7
Blowing Rock	118	Greenville	174	Mt. Mitchell	171	Tryon	171
Boone	109	Hanging Rock	37	Murphy	281	Wadesboro	78
Bryson City	218	Harkers Island	254	Nags Head	286	Warsaw	151
Burlington	38	Henderson	109	New Bern	199	Waynesville	204
Candor	50	Hendersonville	176	North Wilkesboro	72	West Jefferson	103
Canton	179	Hickory	91	Old Fort	158	White Lake	147
Cape Hatteras	328	Jacksonville	197	Oxford	99	Whiteville	147
Carthage	65	Kannapolis	52	Plymouth	211	Williamston	188
Chapel Hill	61	Kill Devil Hill	290	Raleigh	93	Wilmington	192
Charlotte	78	Kitty Hawk	297	Reidsville	41	Wilson	136
Cherokee	210	Kinston	166	Ridgecrest	162	Winston-Salem	19
Concord	57	Laurinburg	107	Roanoke Rapids	164	Wrightsville Beach	207
Denton	24	Leaksville	47	Rockingham	82	Wallace	163
Dobson	61	Lenoir	106	Rocky Mount	140	Yadkinville	50
Durham	70	Lexington	17	Roxboro	74	Yeatsville	213
Elizabeth City	253	Lillington	91	Salisbury	38	Zebulon	110
Elizabethtown	140	Lumberton	126	Sanford	66	Zionville	124
Elkin	59	Lake Junaluska	199	Shelby	107		
Enfield	157	Little Switzerland	168	Siler City	41		

SHERATON HOTEL
314 North Main Street



MILEAGE FROM HIGH POINT TO CITIES OUT OF NORTH CAROLINA

Albany	730	Des Moines	1085	Louisville	517	Salt Lake City	2136
Allentown	497	Detroit	643	Memphis	695	San Antonio	1563
Atlanta	343	Dubuque	918	Miami	834	St. Bernardino	2542
Atlantic City	496	Duluth	1231	Milwaukee	875	Sarasota	739
Augusta	239	El Paso	1758	Minneapolis	1263	San Diego	2626
Baltimore	360	Erie	511	Montreal	914	San Francisco	2917
Birmingham	504	Fort Smith	989	Muncie	560	Santa Barbara	2705
Binghamton	600	Fort Wayne	634	Nashville	460	Santa Fe	1772
Bismark	1704	Fort Worth	1158	New Haven	635	Savannah	341
Boston	779	Fredericton	1184	New Orleans	847	Scranton	587
Buffalo	641	Gadsden	480	New York	578	Seattle	3063
Bangor	993	Glacier N. Park	2375	Norfolk	255	Sioux City	1282
Champaign	717	Grand C.N.P.	2165	North Platte	1499	Spokane	2912
Chattanooga	367	Grand Rapids	709	Omaha	1259	Steubenville	510
Cheraw	103	Hagerstown	346	Orlando	649	Syracuse	658
Chicago	787	Haines City	588	Philadelphia	458	Tampa	661
Cincinnati	481	Halifax	1576	Phoenix	2271	Toledo	583
Cleveland	513	Houston	1333	Pittsburgh	483	Toronto	844
Clinton	902	Indianapolis	591	Port Huron	657	Tulsa	1128
Colorado Springs	1705	Iowa City	932	Portland, Maine	795	Washington	311
Columbus	480	Jackson	761	Portland, Oregon	2949	Wells	2339
Dallas	1125	Jacksonville	497	Pueblo	1687	Williamsburg	250
Danville	61	Kansas City	1050	Quebec	1016	Yellowstone	2206
Davenport	881	La Grange	420	Richmond	217	York	410
Dayton	507	Laredo	1526	Rochester	658		
Daytona Beach	589	Little Rock	833	St. Augustine	534		
Denver	1684	Los Angeles	2607	St. Louis	789		



HOLIDAY INN
West Green Drive Extension



COLONIAL MOTOR INN
Highway 29-70 South and I-85

MOTEL AND HOTEL ROOMS IN HIGH POINT

	Total Rooms
HOLIDAY INN MOTEL, W. Green Drive Ext.	84
HOLIDAY INN DOWNTOWN MOTEL, 236 S. Main Street	118
HIGH POINT MOTOR LODGE MOTEL, S. Main Street Ext. & I-85	100
TOWN HOUSE MOTEL, 400 S. Main Street	45
TRAVELODGE MOTEL, 425 S. Main Street	37
COLONIAL MOTOR INN MOTEL, Hwy. 29-70 South	36
PARADISE MOTEL, Hwy. 29-70 South	26
Total Motel Rooms	446
SHERATON HOTEL, 314 N. Main Street	200
Total Rooms in High Point or Close Vicinity	646



**TRAVELODGE
MOTEL**
425 South Main Street



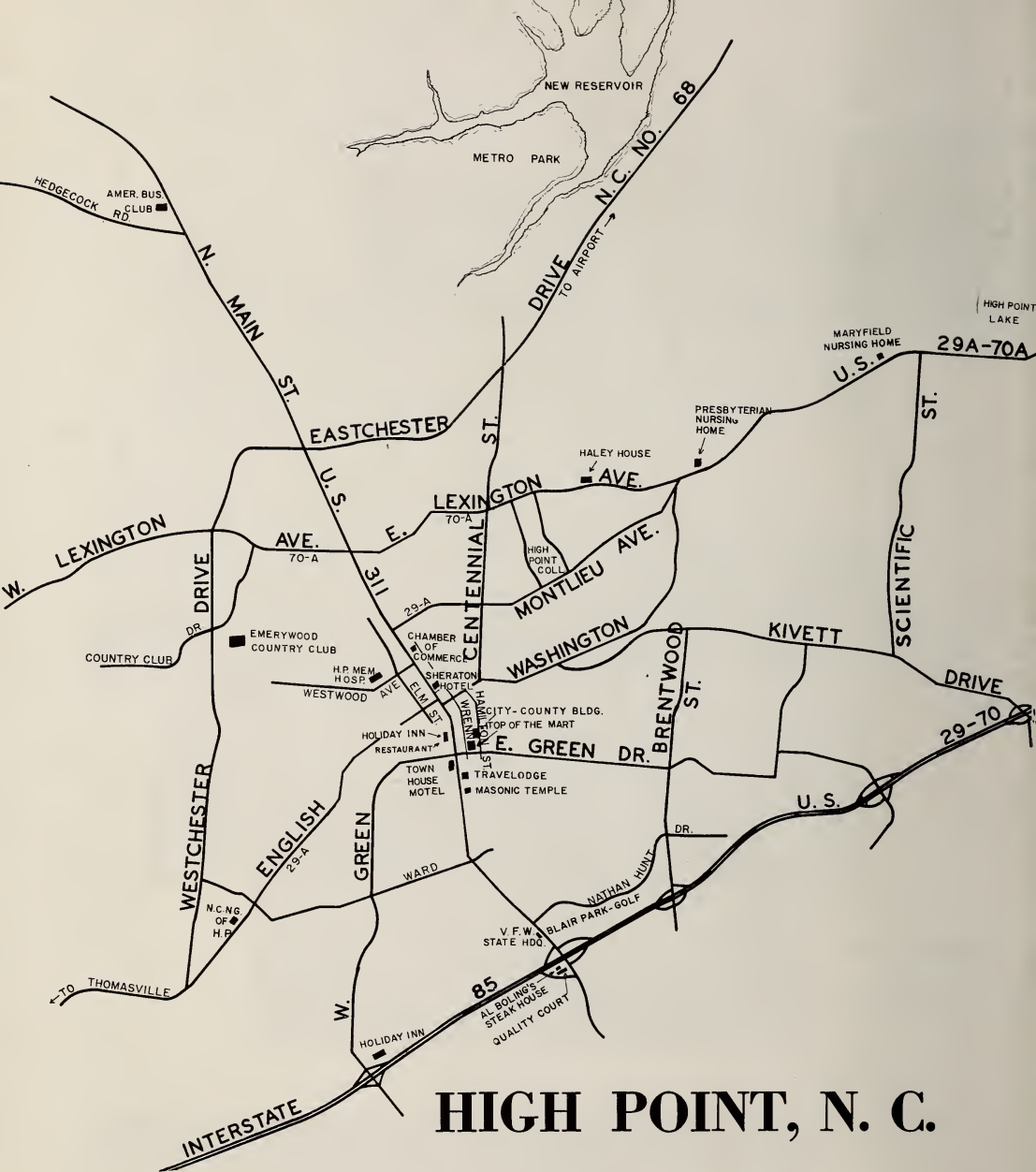
**TOWN HOUSE
MOTEL**
400 South Main Street



HOLIDAY INN
Downtown
236 South Main Street



**HIGH POINT
MOTOR LODGE**
South Main Street at I-85



**THE FURNITURE AND HOSIERY CAPITAL
OF THE WORLD**

and

The Only International Furniture Market